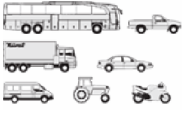




VOLVO - Ø 98,43

87-73646-STD



Motor Özellikleri
(Engine Specifications)

İmalatçı (Manufacturer):
VOLVO
Çap (Diameter): Ø 98,43
FM Grup No: 880128

TD 61 A

6 Sil. Dizel 5480cc
103-150 Kw (140-204 Ps)
Turbo Sabit Motor (Fixed
Engine)
1985...

TD 61 ACE

6 Sil. Dizel 5480cc
103-150 Kw (140-204 Ps)
Turbo Sabit Motor (Fixed
Engine)
1985...

TD 61 AG

6 Sil. Dizel 5480cc
103-150 Kw (140-204 Ps)
Turbo Sabit Motor (Fixed
Engine)
1985...

TD 61 AGP

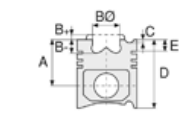
6 Sil. Dizel 5480cc
103-150 Kw (140-204 Ps)
Turbo Sabit Motor (Fixed
Engine)
1985...

TD 61 AP

6 Sil. Dizel 5480cc
103-150 Kw (140-204 Ps)
Turbo Sabit Motor (Fixed
Engine)
1985...

TD 61 AW

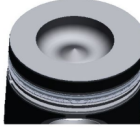
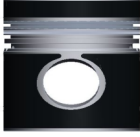
6 Sil. Dizel 5480cc
103-150 Kw (140-204 Ps)
Turbo Sabit Motor (Fixed
Engine)
1985...



Piston Ölçüleri
(Piston Dimensions)

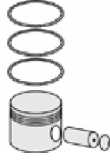
A : 79.400
B- : 23.500
BØ : 57.000
BX : 2.000
D : 124.400
E : 24.000

Pim : 40 x 77,3



Piston Özellikleri
(Piston Features)

Segman Taşıyıcı
(Ring Carrier)
Gözarası Düz
(Flat Eye Gap)



Piston Parça No
(Piston Part No)

87-833000-02
87-73646-STD



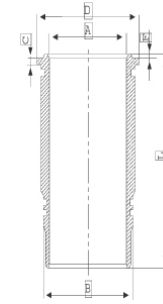
Segman Seti
(Ring Set)

06-833000-80-STD
2.385 CK KV1
3.160 CR GOE
4.747 CR STD

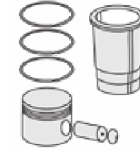


Silindir Gömleği
(Liner)

14-401210-00-WH
B : 110.000
L : 237.400
D : 119.100
C : 9.660
F : 3.590

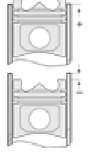


O-RİNG BİLGİ
(O-ring Information)
24-35043-41/O
1x 109*5,8 FPM LILA
2x 109*5,8 EPDM
1x 104*1,5 FPM



Silindir Kit
(Assembly Set)

89-833000-02-STD
89-73646-STD



Piston - Blok Montaj
Yüksekliği
(Piston - Block
Assembly Height)





VOLVO - Ø 98,43

87-73646-STD



Motor Özellikleri
(Engine Specifications)

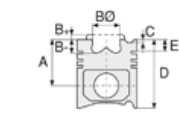
TD 61 G
6 Sil. Dizel 5480cc
103-150 Kw (140-204 Ps)
Turbo Sabit Motor (Fixed Engine)
1985...

TD 61 R
6 Sil. Dizel 5480cc
103-150 Kw (140-204 Ps)
Turbo Sabit Motor (Fixed Engine)
1985...

TID 61 A
6 Sil. Dizel 5480cc
103-150 Kw (140-204 Ps)
Turbo Sabit Motor (Fixed Engine)
1985...

TID 61 ACE
6 Sil. Dizel 5480cc
103-150 Kw (140-204 Ps)
Turbo Sabit Motor (Fixed Engine)
1985...

TWD 61 G
6 Sil. Dizel 5480cc
103-150 Kw (140-204 Ps)
Turbo Sabit Motor (Fixed Engine)
1985...



Piston Ölçüleri
(Piston Dimensions)



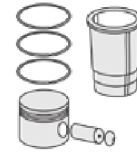
Piston Parça No
(Piston Part No)



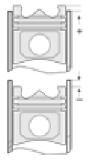
Segman Seti
(Ring Set)



Silindir Gömleği
(Liner)

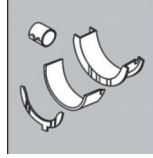


Silindir Kit
(Assembly Set)



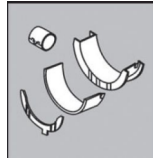
Piston - Blok Montaj
Yüksekliği
(Piston - Block
Assembly Height)

Ana Yatak
(Main Bearing)



H969/7 STD

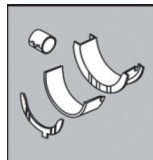
Kol Yatak
(Connecting Rod Bearing)



71-3695/6 STD

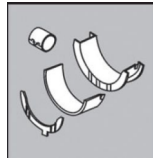
71-3446/6 STD

Ay Yatak
(Thrust Washer)



A121/4 STD

Kol Burcu
(Small End Bushing)



55-3524 SEMI

Silindir Kapak Conta
(Cylinder Head Gasket)



DT830

