



VOLVO-KHD - Ø 120

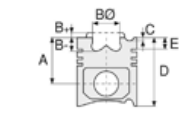
87-73665-STD



Motor Özellikleri
(Engine Specifications)

İmalatçı (Manufacturer):
VOLVO
Çap (Diameter): Ø 120
FM Grup No: 8878

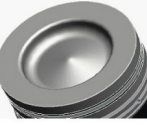
D9A Euro 3
6 Sil. Dizel 9664cc
134-283 KW (264-385 PS)
18:1 Fm9 2001...



Piston Ölçüleri
(Piston Dimensions)

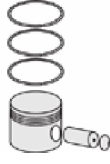
A : 85.450
B - : 14.570
BØ : 77.000
D : 129.950
E : 13.900

Pim : 54 x 96



Piston Özellikleri
(Piston Features)

Segman Taşıyıcı
(Ring Carrier)
Soğutma Kanallı
(Cooling Gallery)
Yağ Püskürtme Oyuğu
(Oil Jet Cut-Out)
Gözarası Konik
(Conical Eye Gap)



Piston Parça No
(Piston Part No)

87-832800-02
87-73665-STD



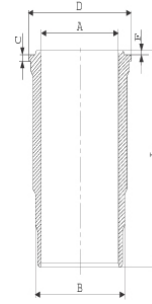
Segman Seti
(Ring Set)

06-832800-80-STD
4.000 CK KV1
3.000 IKA
3.000 NT ST

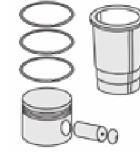


Silindir Gömleği
(Liner)

14-480230-00-WH
B : 139.000
L : 250.050
D : 149.000
C : 11.200
F : 0.850

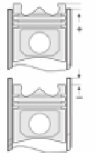


O-RING BİLGİ
(O Ring Information)
24-35044-30/O
1x 128*137*5 EPDM
1x 128*137*5 FPM
1x 132,50*2,40 FPM



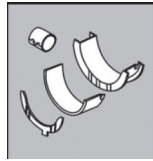
Silindir Kit
(Assembly Set)

89-832800-02-STD
89-73665-STD



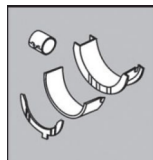
Piston - Blok Montaj
Yüksekliği
(Piston - Block
Assembly Height)

Ana Yatak
(Main Bearing)



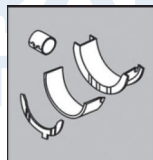
H1008/7 STD

Kol Yatak
(Connecting Rod Bearing)



71-4023/6 STD

Kol Burcu
(Small End Bushing)



55-4025 SEMI

