



VOLVO-KHD - Ø 120

87-73666-STD



Motor Özellikleri
(Engine Specifications)

İmalatçı (Manufacturer):
VOLVO
Çap (Diameter): Ø 120
FM Grup No: 880159

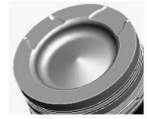
D9B EURO 5

6 Sil. Dizel 9400cc 191
kW(260 hp) B9 OTOBUS
(Truck)
2009...

Piston Ölçüleri
(Piston Dimensions)

A : 85.450
B - : 14.850
BØ : 79.000
C1 : 1.000
C2 : 1.000
D : 129.950
E : 14.100

Pim : 54 x 96



Piston Özellikleri
(Piston Features)

Segman Taşıyıcı
(Ring Carrier)
Soğutma Kanallı
(Cooling Gallery)
Yağ Püskürtme Oyuğu
(Oil Jet Cut-Out)
Gözarası Konik
(Conical Eye Gap)

Piston Parça No
(Piston Part No)

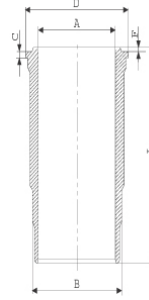
87-833600-02
87-73666-STD

Segman Seti
(Ring Set)

06-833600-20-STD
3.500 PVD ST
2.500 NT ST
3.000 NT ST

Silindir Gömleği
(Liner)

14-480460-00-WH
B : 139.000
L : 250.050
D : 149.000
C : 11.200
F : 1.020



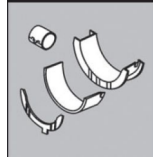
O-RING BİLGİ
(O Ring Information)
24-35044-30/O
1x 128*137*5 EPDM
1x 128*137*5 FPM
1x 132,50*2,40 FPM

14-480460-00-WH
O-RING BİLGİ
(O Ring Information)
24-35044-30/O
1x 128*137*5 EPDM
1x 128*137*5 FPM
1x 132,50*2,40 FPM

Piston - Blok Montaj
Yüksekliği
(Piston - Block
Assembly Height)

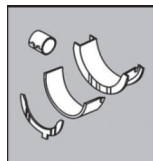
89-833600-02-STD
89-73666-STD

Ana Yatak
(Main Bearing)



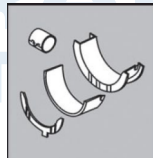
H1008/7 STD

Kol Yatak
(Connecting Rod Bearing)



71-4023/6 STD

Kol Burcu
(Small End Bushing)



55-4025 SEMI

