



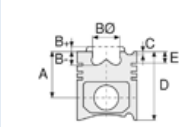
Motor Özellikleri
(Engine Specifications)

İmalatçı (Manufacturer):
SAAB SCANIA
Çap (Diameter): Ø 127
FM Grup No: 7538

DSC11-08
6 Sil. Dizel 11020cc
228Kw (310 PS) 17:1
TURBO INTERCOOLED
K 414, K 414B, K 420,
K 424, K 425, K 425B,
K 435, P 113
1987....

DSC11-10
6 Sil. Dizel 11020cc
228Kw (310 PS) 17:1
TURBO INTERCOOLED
K 414, K 414B, K 424,
K 425, K 425B, K 435,
P 113, R 113
1978....

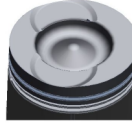
DSC11.70 N/S EURO II
6 Sil. Dizel 11020cc
280Kw (381 PS) 17:1
TURBO INTERCOOLED
MA 380A, R113
1082....



Piston Ölçüleri
(Piston Dimensions)

A : 98.760
B - : 22.700
BØ : 75.550
C1 : 2.960
D : 156.260
E : 23.300

Pim: 50 x 107,8



Piston Özellikleri
(Piston Features)

Segman Taşıyıcı
(Ring Carrier)
Yağ Püskürtme Oyuğu
(Oil Jet Cut-out)
Gözarası Konik
(Conical Eye Gap)






Piston Parça No
(Piston Part No)

87-962000-93
87-73731-STD



Segman Seti
(Ring Set)

06-962000-20-STD
3.500  CR KV1
2.385  STD
4.747  CR STD

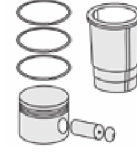
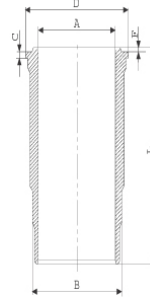
Goetze® LKZ-Ring®



Silindir Gömleği
(Liner)

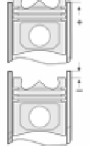
14-458190-00-WH

B : 139.930
L : 291.000
D : 153.800
C : 7.940
F : 0.800
R : 21.600



Silindir Kit
(Assembly Set)

88-962000-93-STD
88-73731-STD



Piston - Blok Montaj
Yüksekliği
(Piston - Block
Assembly Height)





Motor Özellikleri
(Engine Specifications)



Piston Ölçüleri
(Piston Dimensions)



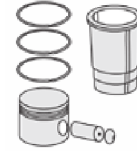
Piston Parça No
(Piston Part No)



Segman Seti
(Ring Set)



Silindir Gömleği
(Liner)

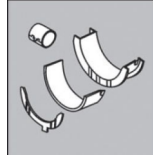


Silindir Kit
(Assembly Set)



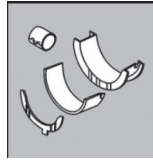
Piston - Blok Montaj
Yüksekliği
(Piston - Block
Assembly Height)

Ana Yatak
(Main Bearing)



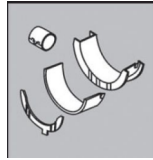
H1059/7 STD

Kol Yatak
(Connecting Rod Bearing)



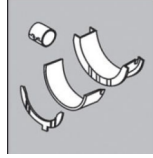
71-4237/6 STD

Eksantrik Yatak
(Camshaft Bearing)



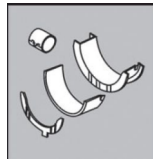
N197/4 SEMI

Ay Yatak
(Thrust Washer)



A216/4 STD

Kol Burcu
(Small End Bushing)



55-4240 SEMI

Silindir Kapak Conta
(Cylinder Head Gasket)



DS560

