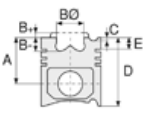




RVI - Ø 102

87-73825-STD



Motor Özellikleri
(Engine Specifications)

İmalatçı (Manufacturer):
RVI
Çap (Diameter): 102
FM Grup No: 1910

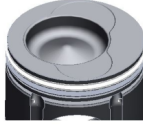
MIDRO4.02.26.A4
4 Sil. Dizel 4118cc
MIDLUM 135
1999....

MIDRO4.02.26.B4
4 Sil. Dizel 4118cc 17:1
DCI 4
MIDLUM 150
1999...

Piston Ölçüleri
(Piston Dimensions)

A : 71.200
B- : 20.800
BØ : 60.000
BX : 6.500
BY : 0.500
C1 : 0.800
D : 108.200
E : 7.800

Pim: 41,985 x 84



Piston Özellikleri
(Piston Features)

Segman Taşıyıcı
(Ring Carrier)
Gözarası Düz
(Flat Eye Gap)

Piston Parça No
(Piston Part No)

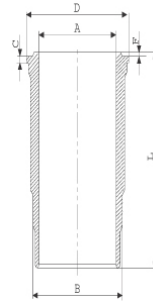
87-887500-02
87-73825-STD

Segman Seti
(Ring Set)

06-887500-80-STD
3.500 CKP KV1
2.500 CRP STD
4.000 CRP STD
Goetze® LKZ-Ring®

Silindir Gömleği
(Liner)

14-480090-00-WH
B : 114.000
L : 217.800
D : 122.500
C : 8.000
F : 0.800



O-RING BİLGİ (O-Ring
Informations)
24-35043-70/O
2x 104*3 FPM

Silindir Kit
(Assembly Set)

88-887500-02-STD
88-73825-STD

Piston - Blok Montaj
Yüksekliği
(Piston - Block
Assembly Height)





RVI - Ø 102

87-73825-STD



Motor Özellikleri
(Engine Specifications)



Piston Ölçüleri
(Piston Dimensions)



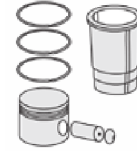
Piston Parça No
(Piston Part No)



Segman Seti
(Ring Set)



Silindir Gömleği
(Liner)

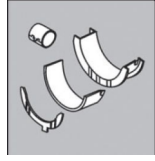


Silindir Kit
(Assembly Set)



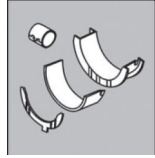
Piston - Blok Montaj
Yüksekliği
(Piston - Block
Assembly Height)

Ana Yatak
(Main Bearing)



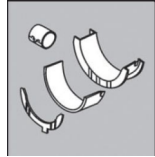
H1090/7 STD

Kol Yatak
(Connecting Rod Bearing)



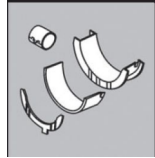
71-4289/7 STD

Ay Yatak
(Thrust Washer)



A189/4 STD

Kol Burcu
(Small End Bushing)



55-4291 SEMI

Sil. Kapak. Conta
(Cylinder Head Gasket)



EH6230

