



RVI - Ø 123,03

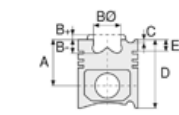
87-73833-STDB



**Motor Özellikleri**  
(Engine Specifications)

İmalatçı (Manufacturer):  
RVI  
Çap (Diameter): 123,03  
FM Grup No: 7412

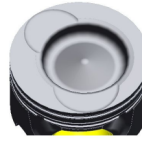
**MIDR O6.23.06 A41**  
6 Sil. Dizel 11160cc  
294 Kw (400 PS) 17:1  
Turbocharged Intercooled  
PREMIUM 385,  
PREMIUM 400  
1999....



**Piston Ölçüleri**  
(Piston Dimensions)

A : 78.300  
B- : 24.100  
BØ : 75.000  
BX : 5.000  
C1 : 0.900  
C2 : 1.200  
D : 120.300  
E : 10.000

Pim: 50 x 97



**Piston Özellikleri**  
(Piston Features)

Segman Taşıyıcı  
(Ring Carrier)  
Yağ Püskürtme Oyuğu  
(Oil Jet Cut-out)  
Burçlu Piston  
(Bushing Piston)  
Gözarası Konik  
(Conical Eye Gap)



**Piston Parça No**  
(Piston Part No)

87-886800-13  
87-73833-STDIB  
0,20 mm Kısa (Short)  
  
87-886800-12  
87-73833-STDB



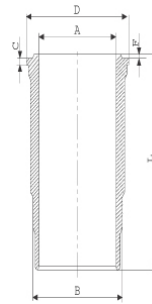
**Segman Seti**  
(Ring Set)

06-886800-20-STD  
3.500 CK KV1  
3.000 CR GOE  
4.000 CR GOE  
  
Goetze® LKZ-Ring®

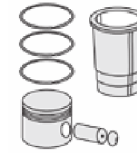


**Silindir Gömleği**  
(Liner)

14-451240-00-WH  
B : 135.000  
L : 257.000  
D : 147.300  
C : 9.350  
F : 0.750

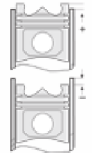


**O-RING BİLGİ (O-Ring Informations)**  
24-35029-51/O  
2x 128\*2 FPM  
1x 134,2\*5,7 FPM  
1x 134,2\*5,7 FPM



**Silindir Kit**  
(Assembly Set)

89-886800-52-STD  
89-73833-STDB



**Piston - Blok Montaj**  
**Yüksekliği**  
(Piston - Block  
Assembly Height)

+0,15/+0,50





RVI - Ø 123,03

87-73833-STD B



**Motor Özellikleri**  
(Engine Specifications)



**Piston Ölçüleri**  
(Piston Dimensions)



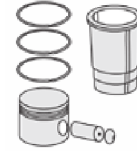
**Piston Parça No**  
(Piston Part No)



**Segman Seti**  
(Ring Set)



**Silindir Gömleği**  
(Liner)

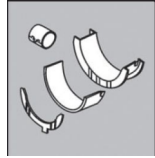


**Silindir Kit**  
(Assembly Set)



**Piston - Blok Montaj**  
**Yüksekliği**  
(Piston - Block  
Assembly Height)

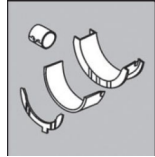
**Ana Yatak**  
(Main Bearing)



H1050/7 STD

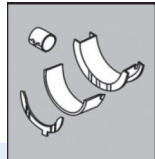
H1097/7 STD

**Kol Yatak**  
(Connecting Rod Bearing)



71-4290 STD

**Eksantrik Yatak**  
(Camshaft Bearing)



A207/4 STD

**Sil. Kapak. Conta**  
(Cylinder Head Gasket)



BW390

30-025716-00

