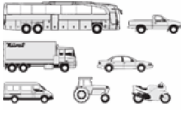




VOLVO - Ø 131

87-75001-STDB



Motor Özellikleri
(Engine Specifications)

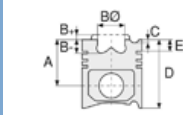
İmalatçı (Manufacturer):
VOLVO
Çap (Diameter): Ø 131
FM Grup No: 8880

D12C Euro 3

6 Sil. Dizel 12100cc
309-368 KW
(420-500 PS) 18.5:1
TURBO, LLK
FH12
1997....

D12D Euro 3

6 Sil. Dizel 12100cc
309-368 KW
(420-500 PS) 15.5:1
TURBO, LLK
FH12
1997....



Piston Ölçüleri
(Piston Dimensions)

A : 87.400
B- : 17.200
BØ : 89.000
D : 125.700
E : 14.080

Pim: 55 x 107



Piston Özellikleri
(Piston Features)

Segman Taşıyıcı
(Ring Carrier)
Soğutma Kanallı
(Coolin Gallery)
Yağ Püskürtme Oyuğu
(Oil Jet Cut-out)
Gözarası Konik
(Conical Eye Gap)



Piston Parça No
(Piston Part No)

87-123200-02
87-75001-STDB
Çift Parçalı Piston
(Articulated Piston)



Segman Seti
(Ring Set)

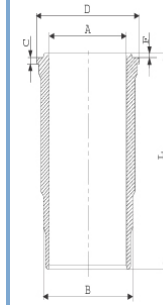
06-123200-20-STD

4.000 CK KV1
3.000 GOE
4.000 NT ST



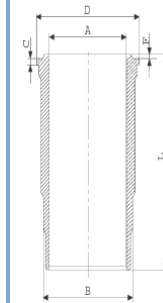
Silindir Gömleği
(Liner)

14-450590-00-WH
B : 144.000
L : 272.800
D : 159.600
C : 11.200
F : 0.900

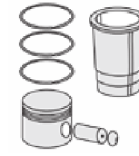


Euro 6 Malzemeli /
O-Ring Bilgi
(Euro 6 Material /
O-Ring Information)
24-24468-02/O
1x 142,8*5,8 FPM
2x 142,8*5,8 EPDM
1x 141*2,4 FPM

15-450260-00-WH
B : 144.000
L : 272.800
D : 159.600
C : 11.200
F : 0.900

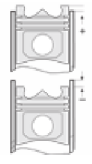


Dış Yüzeyi Krom Kaplı /
O-Ringli (Outer Surface
Chrome Plated / With
O-Ring)



Silindir Kit
(Assembly Set)

89-123200-63-STD
89-75001-STDC



Piston - Blok Montaj
Yüksekliği
(Piston - Block
Assembly Height)

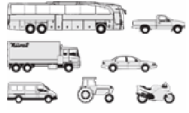
+0,15/+0,65



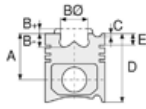


VOLVO - Ø 131

87-75001-STDB



Motor Özellikleri
(Engine Specifications)



Piston Ölçüleri
(Piston Dimensions)



Piston Parça No
(Piston Part No)

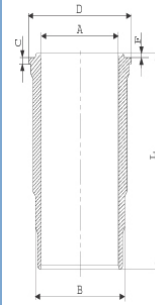


Segman Seti
(Ring Set)



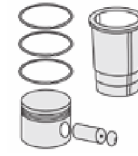
Silindir Gömleği
(Liner)

14-451270-00-WH
B : 144.000
L : 272.800
D : 159.600
C : 11.200
F : 0.900

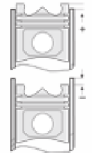


Euro 6 Malzemeli /
O-Ring Bilgi
(Euro 6 Material /
O-Ring Information)
24-24468-02/O
1x 142,8*5,8 FPM LILA
2x 142,8*5,8 EPDM
1x 141*2,4 FPM

14-450590-00-WH
Euro 6 Malzemeli /
O-Ring Bilgi
(Euro 6 Material /
O-Ring Information)
24-24468-02/O
1x 142,8*5,8 FPM
2x 142,8*5,8 EPDM
1x 141*2,4 FPM



Silindir Kit
(Assembly Set)



Piston - Blok Montaj
Yüksekliği
(Piston - Block
Assembly Height)



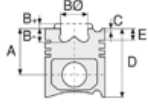


VOLVO - Ø 131

87-75001-STDB



Motor Özellikleri
(Engine Specifications)



Piston Ölçüleri
(Piston Dimensions)



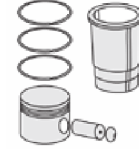
Piston Parça No
(Piston Part No)



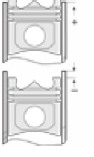
Segman Seti
(Ring Set)



Silindir Gömleği
(Liner)

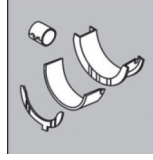


Silindir Kit
(Assembly Set)



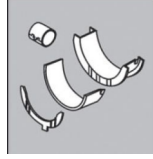
Piston - Blok Montaj
Yüksekliği
(Piston - Block
Assembly Height)

Ana Yatak
(Main Bearing)



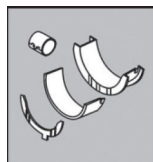
H1015/7 STD

Kol Yatak
(Connecting Rod Bearing)



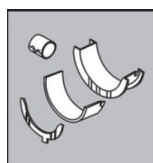
71-3923/6 STD

Eksantrik Yatak
(Camshaft Bearing)



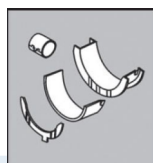
N200/7 STD

Ay Yatak
(Thrust Washer)



A232/4 STD

Kol Burcu
(Small End Bushing)



55-3925 SEMI

Silindir Kapak Conta
(Cylinder Head Gasket)



AF5280

