



MERCEDES BENZ LKW - Ø 132

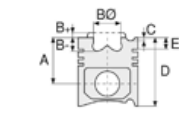
87-75546-STD



Motor Özellikleri
(Engine Specifications)

İmalatçı (Manufacturer):
MERCEDES BENZ LKW
Çap (Diameter): Ø 132
FM Grup No: 6032

OM 471 LA EURO 6
6 Sil. Dizel 310-390
KW / 422-539 PS Actros,
Antos, Arocs,
İŞ MAKINASI (Working
Machine), Setra
2011...



Piston Ölçüleri
(Piston Dimensions)

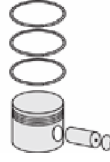
A : 75.000
B- : 17.200
BØ : 94.000
C1 : 1.500
D : 113.000
E : 10.000

Pim : 58 x 88



Piston Özellikleri
(Piston Features)

Soğutma Kanallı
(Cooling Gallery)
Gözarası Konik
(Conical Eye Gap)



Piston Parça No
(Piston Part No)

87-440600-02
87-75546-STD
Monosteel Çelik Piston
(Steel Piston)



Segman Seti
(Ring Set)

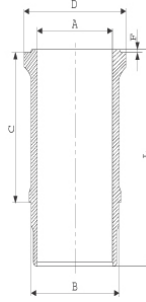
06-440600-20-STD
3.500 GDC ST
2.500 CKS KV4
3.500 CKS KV1

Goetze® LKZ-Ring®
Yağ Segmanı Matkap Delik
(Oil Ring Drill Hole)



Silindir Gömleği
(Liner)

15-610060-00-WH
B : 141.970
L : 256.000
D : 159.000
C : 7.000
R : 8.900

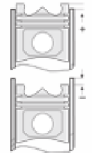


KURUM GİDERME
RİNGLİ VE O-RİNGLİ
(With Scraper Rings
And O-ring)
24-35053-00/0
1x 130*134*4.6 FKM 75
1x 146*153*3,9 FKM 75



Silindir Kit
(Assembly Set)

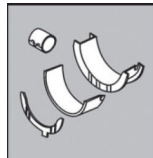
89-440600-02-STD
89-75546-STD



Piston - Blok Montaj
Yüksekliği
(Piston - Block
Assembly Height)

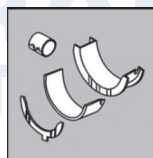
-0,2090
+0,2315

Ana Yatak
(Main Bearing)



72-5021 STD

Kol Yatak
(Connecting Rod Bearing)



71-5022 STD

