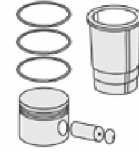




IVECO LKW - Ø 104

87-70776-STD



Motor Özellikleri
(Engine Specifications)

İmalatçı (Manufacturer):
IVECO LKW
Çap (Diameter): Ø 104
FM Grup No: 4010

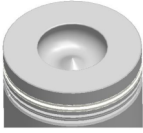
8040.05
4 Sil. Dizel 3908cc
59 Kw (80 PS) 17:1
35 NC, 50 NC, M 23LS,
M24
1986 - 1992

8045.05.000
4 Sil. Dizel 3908cc
52/59 Kw (71/80 PS) 17:1
Khd ile ortak motor
(Common Engine With
Khd)
KAMYON 35.9,
KAMYON 65.9
1987....

Piston Ölçüleri
(Piston Dimensions)

A : 65.150
B- : 22.500
BØ : 52.200
D : 108.500
E : 17.600

Pim: 38 x 85



Piston Özellikleri
(Piston Features)

Segman Taşıyıcı
(Ring Carrier)
Gözarası Düz
(Flat Eye Gap)

Piston Parça No
(Piston Part No)

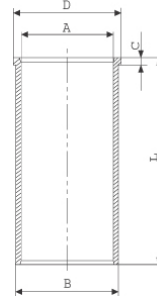
87-839700-22
87-70776-STD
87-839700-23
87-70776-STD1
0,20 mm Kısa (Short)

Segman Seti
(Ring Set)

06-839700-10-STD
2.500 CRP KVI
2.500 P IKA
4.000 CRP STD
Goetze® LKZ-Ring®

Silindir Gömleği
(Liner)

14-010940-00-D
B : 107.000
L : 198.000



14-010942-00-D
B : 107.500
L : 198.000

Dış çap 0,5 mm farklı
(Outside Diameter
0,5 mm Different)

14-010943-00-D
B : 108.000
L : 198.000

Dış çap 1,0 mm farklı
(Outside Diameter
1,0 mm Different)

Silindir Kit
(Assembly Set)

Piston - Blok Montaj
Yüksekliği
(Piston - Block
Assembly Height)

+ 0,460 / + 0,790

