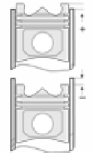
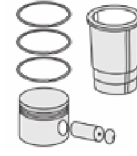
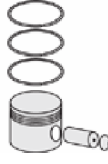
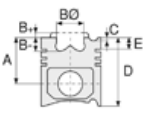




BMC - Ø 94

87-70412-STD



Motor Özellikleri
(Engine Specifications)

İmalatçı (Manufacturer):
BMC
Çap (Diameter): 94
FM Grup No: 1322

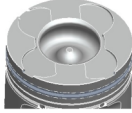
2.8CRI C.RAIL

4 Sil. Dizel 2776cc 82/95,6
KW(110/130 BG)
290M, 310P, 360P, 360V,
360VH, 400P,
MEGA STAR 290V
2004...

Piston Ölçüleri
(Piston Dimensions)

A : 52.100
B- : 18.800
BØ : 44.500
C1 : 2.000
D : 80.000
E : 10.000

Pim: 32 x 74



Piston Özellikleri
(Piston Features)

Segman Taşıyıcı
(Ring Carrier)
Soğutma Kanallı
(Coolin Gallery)
Yağ Püskürtme Oyuğu
(Oil Jet Cut-out)
Gözarası Konik
(Conical Eye Gap)

Piston Parça No
(Piston Part No)

87-846100-02
87-70412-STD

Segman Seti
(Ring Set)

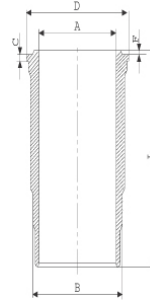
06-846100-00-STD

2.500 CKP KV1
1.500 P KV1
2.000 P GOE

Goetze® LKZ-Ring® /
Yağ segmanı matkap
delikli (Oil Ring Drill
Perforated)

Silindir Gömleği
(Liner)

14-480340-00 WH
B : 101.000
L : 167.800
D : 110.000
C : 6.850
F : 1.000



Silindir Kit
(Assembly Set)

88-846100-02-STD
88-70412-STD

Piston - Blok Montaj
Yüksekliği
(Piston - Block
Assembly Height)

1,32 conta (Notch)
+ 0,46 / + 0,60

1,42 conta (Notch)
1.Kertik + 0,62 / +0,70

1,52 conta (Notch)
2.Kertik +0,71 / + 0,80

