



MAN - Ø 128

87-71580-STDB



**Motor Özellikleri**  
(Engine Specifications)

İmalatçı (Manufacturer):  
MAN  
Çap (Diameter): Ø 128  
FM Grup No: 5430

**D 2866 LF 26 EURO3**

6 Sil. Dizel 11967cc  
228/301 Kw  
(310/409 PS) 19:1  
Turbo Intercool,  
NEOMAN LOH 34 24 Valf  
18.313, 18.413, 33.362,  
F2000, FORTUNA,  
LION'S COACH OTOBUS,  
TG310, TG410  
1999 - 2006

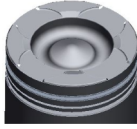
**D 2866 LOH 29**  
**EURO 3**

6 Sil. Dizel 11967cc  
301 KW (410 PS) 19:1  
Turbo Intercoler 24 Valf  
24.310, 24.350, RH413,  
RH414  
2001 - 2006

**Piston Ölçüleri**  
(Piston Dimensions)

A : 89.750  
B - : 22.000  
BØ : 80.000  
C1 : 1.900  
D : 141.750  
E : 18.600

Pim: 46 x 105



**Piston Özellikleri**  
(Piston Features)

Segman Taşıyıcı  
(Ring Carrier)  
Yağ Püskürtme Oyuğu  
(Oil Jet Cut-out)  
Gözarası Konik  
(Conical Eye Gap)

**Piston Parça No**  
(Piston Part No)

87-143800-02  
87-71580-STD

87-143800-33  
87-71580-STD1B  
0,20 mm Kısa (Short)

87-143800-34  
87-71580-STD2B  
0,40 mm Kısa (Short)

87-143800-32  
87-71580-STDB

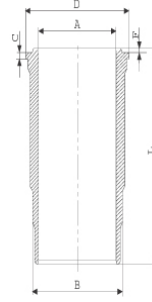
**Segman Seti**  
(Ring Set)

06-143800-40-STD  
4.000 CK KV4  
3.000 CR GOE  
4.000 CR GOE  
Goetze® LKZ-Ring®

06-143800-20-STD  
4.000 CK KV4  
3.000 CR GOE  
4.000 CR GOE  
Goetze® LKZ-Ring®

**Silindir Gömleği**  
(Liner)

14-450500-00-WH  
B : 144.500  
L : 270.000  
D : 153.800  
C : 10.070  
F : 1.000



Dış Yüzeyi Fosfat Kaplı /  
O-RING Bilgi  
(Outer Surface  
Phosphate Coated /  
O-RING Information)  
24-32448-70/O  
2x 138\*2,1 FPM  
2x 144\*4 FPM

14-450500-00-WH  
Dış Yüzeyi Fosfat Kaplı /  
O-RING Bilgi  
(Outer Surface  
Phosphate Coated /  
O-RING Information)  
24-32448-70/O  
2x 138\*2,1 FPM  
2x 144\*4 FPM

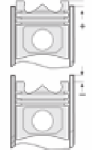
**Silindir Kit**  
(Assembly Set)

89-143800-02-STD  
89-71580-STDD

89-143800-32-STD  
89-71580-STDB

**Piston - Blok Montaj**  
**Yüksekliği**  
(Piston - Block  
Assembly Height)

+0,01 / +0,33



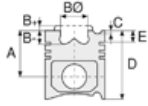


MAN - Ø 128

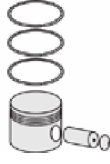
87-71580-STDB



**Motor Özellikleri**  
(Engine Specifications)



**Piston Ölçüleri**  
(Piston Dimensions)



**Piston Parça No**  
(Piston Part No)

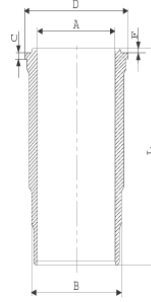


**Segman Seti**  
(Ring Set)

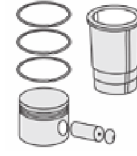


**Silindir Gömleği**  
(Liner)

14-450800-00-WH  
B : 144.500  
L : 270.000  
D : 153.800  
C : 10.070

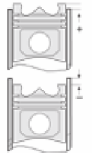


**O-RING Bilgi**  
(O-RING Information)  
24-35048-40/OT  
1x 138\*144,75\*4,6 FPM  
2x 144\*4 FPM 70



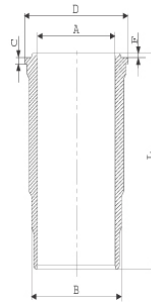
**Silindir Kit**  
(Assembly Set)

89-143800-42-STD  
89-71580-STDC



**Piston - Blok Montaj**  
**Yüksekliği**  
(Piston - Block  
Assembly Height)

14-450970-00-WH  
B : 144.500  
L : 270.000  
D : 153.800  
C : 10.070  
F : 1.000



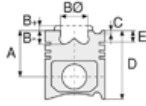
O-RING Kanalı 6mm ,  
Flanş Üstü Faturalı  
(O-RING Channel 6mm ,  
On Flange Posted)

89-143800-52-STD  
89-71580-STDE





**Motor Özellikleri**  
(Engine Specifications)



**Piston Ölçüleri**  
(Piston Dimensions)



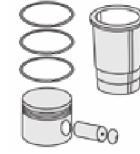
**Piston Parça No**  
(Piston Part No)



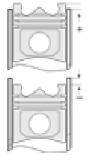
**Segman Seti**  
(Ring Set)



**Silindir Gömleği**  
(Liner)



**Silindir Kit**  
(Assembly Set)



**Piston - Blok Montaj**  
**Yüksekliği**  
(Piston - Block  
Assembly Height)

14-450971-00-WH  
B : 144.500  
L : 270.000  
D : 153.800  
C : 10.070  
F : 1.000

O-RING Bilgi  
( O-RING Information)  
BOĞAZ ALT ÇAPI  
+0,50 MM FARKLI  
ÇALIŞMASI  
(Throat Lower Diameter  
+0.50 Mm Different  
Study)  
24-35048-40/0  
1x 138\*144,75\*4,6 FPM  
2x 144\*4 FPM 70

14-450972-00-WH  
B : 144.500  
L : 270.000  
D : 153.800  
C : 10.070  
F : 1.000

O-RING Bilgi  
( O-RING Information)  
BOĞAZ ALT ÇAPI  
+1,00 MM FARKLI  
ÇALIŞMASI  
(Throat Lower Diameter  
+1.00 Mm Different  
Study)  
24-35048-40/0  
1x 138\*144,75\*4,6 FPM  
2x 144\*4 FPM 70



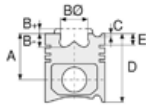


MAN - Ø 128

87-71580-STDB



**Motor Özellikleri**  
(Engine Specifications)



**Piston Ölçüleri**  
(Piston Dimensions)



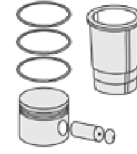
**Piston Parça No**  
(Piston Part No)



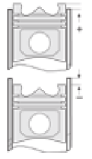
**Segman Seti**  
(Ring Set)



**Silindir Gömleği**  
(Liner)

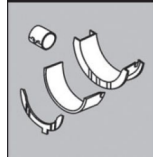


**Silindir Kit**  
(Assembly Set)



**Piston - Blok Montaj**  
**Yüksekliği**  
(Piston - Block  
Assembly Height)

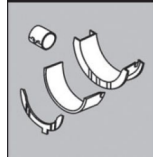
**Ana Yatak**  
(Main Bearing)



H1239/7 STD

H083/7 0.50MM

**Kol Yatak**  
(Connecting Rod Bearing)

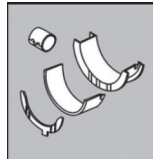


71-3637 STD

71-2965 STD

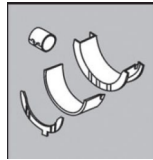
71-3561/6 STD

**Eksantrik Yatak**  
(Camshaft Bearing)



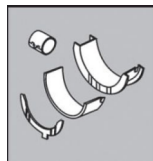
N109/7L STD

**Ay Yatak**  
(Thrust Washer)



A159/4 STD

**Kol Burcu**  
(Small End Bushing)



55-2862 SEMI

**Sil. Kapak. Conta**  
(Cylinder Head Gasket)



BG850

