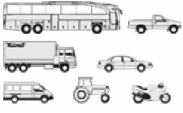




VOLKSWAGEN - Ø 83,01

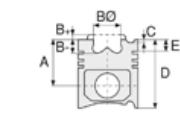
87-72492-STD



Motor Özellikleri
(Engine Specifications)

İmalatçı (Manufacturer):
VOLKSWAGEN
Çap (Diameter): Ø 83,01
FM Grup No: 860141

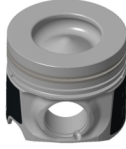
CRCD-CVWA-CJMA-
CJGD-CRCA-CVVA
6 Sil-V6 Dizel 2967cc
150-193 Kw / 204-262 PS
TOUAREG
2010....



Piston Ölçüleri
(Piston Dimensions)

A : 46.500
B - : 14.250
BØ : 48.000
D : 70.800
E : 10.000

Pim: 30 x 68



Piston Özellikleri
(Piston Features)

Sert Anotlama
(Hard Anodizing)
Çelik Plaka
(Steel Strut)
Segman Taşıyıcı
(Ring Carrier)
Soğutma Kanallı
(Coolin Gallery)
Yağ Püskürtme Oyuğu
(Oil Jet Cut-out)
Gözarası Konik
(Conical Eye Gap)
Gözarası Düz
(Flat Eye Gap)



Piston Parça No
(Piston Part No)

87-433100-02
87-72492-STD

87-433107-02
87-72492 0,50



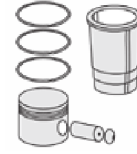
Segman Seti
(Ring Set)

06-433100-90 STD
06-433107-90 0,50

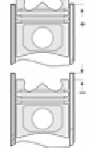
1.750 GDC ST
2.000 CK KV1
3.000 CR GOE



Silindir Gömleği
(Liner)

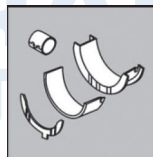


Silindir Kit
(Assembly Set)



Piston - Blok Montaj
Yüksekliği
(Piston - Block
Assembly Height)

Ay Yatak
(Thrust Washer)



A138/4 STD

