



BMW- Ø 84

87-70223-STD

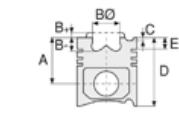


**Motor Özellikleri**  
(Engine Specifications)

İmalatçı (Manufacturer):  
BMW  
Çap (Diameter): 84  
FM Grup No: 1432

**M47N**  
4 Sil. Dizel 2000cc  
320 D, 320 TD, E-46 320  
CD  
2001...

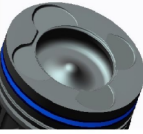
**M57N**  
6 Sil. Dizel 3000cc  
330D, 330CD, 330XD,  
E-53 X5 3,0D, E-60 530D,  
E-61 530D, E-65 730D



**Piston Ölçüleri**  
(Piston Dimensions)

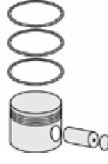
A : 44.870  
B- : 13.500  
BØ : 46.900  
C1 : 1.360  
C2 : 1.480  
D : 70.620  
E : 7.620

Pim: 30 x 68



**Piston Özellikleri**  
(Piston Features)

Segman Taşıyıcı  
(Ring Carrier)  
Soğutma Kanallı  
(Coolin Gallery)  
Yağ Püskürtme Oyuğu  
(Oil Jet Cut-out)  
Burçlu Piston  
(Bushing Piston)  
Gözarası Düz  
(Flat Eye Gap)



**Piston Parça No**  
(Piston Part No)

87-815600-02  
87-70223-STD  
87-815607-02  
87-70223-050  
87-815600-03  
87-70223-STD1  
0,20 mm Kısa (Short)  
87-815607-03  
87-70223-0,501  
0,20 mm Kısa (Short)



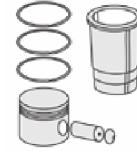
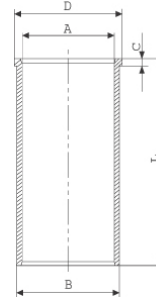
**Segman Seti**  
(Ring Set)

06-815600-00-STD  
06-815607-00 0,50  
3.000 CKP KV1  
2.000 P F14  
3.000 NT ST  
Yağ segmanı matkap  
delikli (Oil Ring Drill  
Perforated)

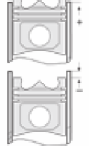


**Silindir Gömleği**  
(Liner)

14-021780-00 D  
B : 87.000  
L : 149.000  
D : 88.500  
C : 6.000



**Silindir Kit**  
(Assembly Set)



**Piston - Blok Montaj**  
Yüksekliği  
(Piston - Block  
Assembly Height)

1.Kertik conta(Notch Seal)  
ile +0,85 / + 0,90

2.Kertik conta(Notch Seal)  
ile +0,90 / + 1,00

3.Kertik conta(Notch Seal)  
ile +1,00 / + 1,10

