

Motor Özellikleri
(Engine Specifications)

Piston Ölçüleri
(Piston Dimensions)

Piston Parça No
(Piston Part No)

Segman Seti
(Ring Set)

Silindir Gömleği
(Liner)

Silindir Kit
(Assembly Set)

Piston - Blok Montaj
Yüksekliği
(Piston - Block
Assembly Height)

İmalatçı (Manufacturer):
CATERPILLAR
Çap (Diameter): Ø 120,65
FM Grup No: 1707

A : 74.000
B- : 19.900
BØ : 85.100
C1 : 2.100
D : 130.000
E : 19.700

87-152300-02
87-70329-STD

06-152300-10-STD

3.120 CRP KV1
3.120 CRP KV1
3.150 CRP KV1

14-488320-00-WH
B : 137.500
L : 255.000
D : 146.000
C : 14.600
F : 1.000

88-152300-02-STD
88-70329-STD

- 0,45 / + 0,06

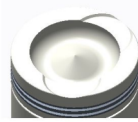
3306

6 Sil. Dizel
65V, 8N 3102, D7G, 140 G

Pim: 43,18 x 94,8

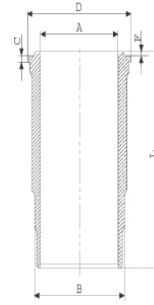
3304

Dizel 7000cc
49/97kW (62-130 PS) 17:1
120 G



Piston Özellikleri
(Piston Features)

Çift Segman Taşıyıcı
(Double Ring Carrier)
Gözarası Konik
(Conical Eye Gap)



14-488320-00-WH
B : 137.500
L : 255.000
D : 146.000
C : 14.600
F : 1.000

14-488620-00-WH
B : 134.450
L : 255.000
D : 144.750
C : 11.300
F : 1.000

14-480180-00-WH
B : 134.450
L : 255.000
D : 144.750
C : 11.300
F : 1.000

