



FIAT - Ø 82

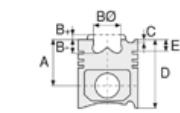
87-70726-STDA



Motor Özellikleri
(Engine Specifications)

İmalatçı (Manufacturer):
FIAT
Çap (Diameter): Ø 82
FM Grup No: 2821

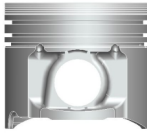
223A.6000 EURO 3
4 Sil. Dizel 1910cc 63 PS
22, 6:1
DOBLO 1.9 D
2000...



Piston Ölçüleri
(Piston Dimensions)

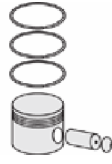
A : 44.500
B- : 1.300
D : 70.300
E : 9.900

Pim : 26 x 65



Piston Özellikleri
(Piston Features)

Yağ Püskürtme Oyuğu
(Oil Jet Cut-Out)
Göz Arası Düz
(Flat Eye Gap)



Piston Parça No
(Piston Part No)

87-124050-03
87-70726-STD1A
0,20mm Kısa (Short)

87-124050-02
87-70726-STDA

87-124056-02
87-70726-040

87-124060-02
87-70726-080

87-124056-03
87-70726-0401
0,20 mm Kısa (Short)



Segman Seti
(Ring Set)

06-124050-00-STD
06-124056-00-0,40 mm
06-124060-00-0,80 mm

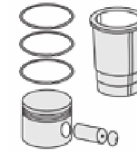
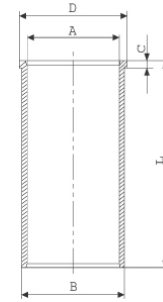
2.000 CKP KV1
2.000 P F14
2.000 CRP GOE

Yağ Segmanı Matkap Delik
(Oil Ring Drill Hole)

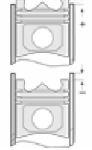


Silindir Gömleği
(Liner)

14-020340-00-D
B : 85.200
L : 155.000
D : 86.200
C : 5.000



Silindir Kit
(Assembly Set)



Piston - Blok Montaj
Yüksekliği
(Piston - Block
Assembly Height)

0,76-0,84 mm Conta İle
(With Gasket)
+0,045/+0,125

0,86-0,94 mm Conta İle
(With Gasket)
+0,126/+0,225

0,96-1,04 mm Conta İle
(With Gasket)
+0,226/+0,305

