



**Motor Özellikleri**  
(Engine Specifications)

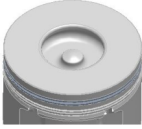
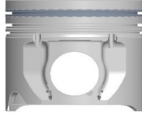
İmalatçı (Manufacturer):  
FORD PKW  
Çap (Diameter): 89,91  
FM Grup No: 2967

**RFCA V184 TDCI**  
4 Sil. Dizel 2400cc 130 Ps  
Common Rail, RCFA  
TRANSIT 350E, TRANSIT  
350ED, TRANSIT 430ED,  
TRANSIT TRAVELLER  
2003 - 2006

**Piston Ölçüleri**  
(Piston Dimensions)

A : 53.500  
B- : 15.620  
BØ : 47.100  
D : 80.500  
E : 9.000

Pim: 32 x 71,1



**Piston Özellikleri**  
(Piston Features)

Segman Taşıyıcı  
(Ring Carrier)  
Soğutma Kanallı  
(Coolin Gallery)  
Yağ Püskürtme Oyuğu  
(Oil Jet Cut-out)  
Gözarası Konik  
(Conical Eye Gap)

**Piston Parça No**  
(Piston Part No)

87-839307-43  
87-70904-050  
0,20 mm Kısa (Short)

87-839300-42  
87-70904-STD

87-839305-42  
87-70904-025

87-839307-42  
87-70904-050

87-839300-43  
87-70904-STD1  
0,20 mm Kısa (Short)

87-839307-44  
87-70904-0.502  
0,40 mm kısa (Short)

87-839300-44  
87-70904-STD2  
0,40 mm kısa (Short)

**Segman Seti**  
(Ring Set)

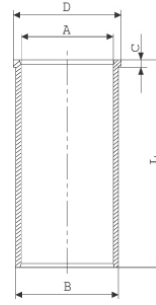
06-839300-00-STD  
06-839305-00 0,25 mm  
06-839307-00 0,50 mm

2.000 CK KV1  
2.000 P AE222  
2.000 NT ST



**Silindir Gömleği**  
(Liner)

14-020540-00-D  
B : 92.500  
L : 165.000  
D : 95.500  
C : 3.000



14-020541-00-D  
B : 93.000  
L : 165.000  
D : 95.500  
C : 3.300

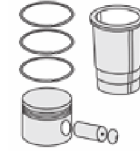
Dış Çap 0,50mm Farklı  
(Outer Diameter  
0,50mm Different)

14-020542-00-D  
B : 93.500  
L : 165.000  
D : 96.000  
C : 4.000

Dış Çap 1,00mm Farklı  
(Outer Diameter  
1,00mm Different)

14-020910-00-D  
B : 92.500  
L : 165.000  
D : 94.000  
C : 5.000

**Silindir Kit**  
(Assembly Set)



**Piston - Blok Montaj**  
**Yüksekliği**  
(Piston - Block  
Assembly Height)

1,10 mm conta ile (With  
Notch)

+0,30 /+0,40

1,15 mm conta ile (With  
Notch)

+0,40/+0,45

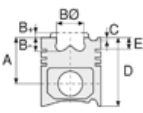
1,20 mm conta ile (With  
Notch)

+0,45 /+0,50

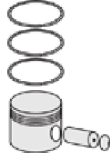




**Motor Özellikleri**  
(Engine Specifications)



**Piston Ölçüleri**  
(Piston Dimensions)



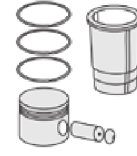
**Piston Parça No**  
(Piston Part No)



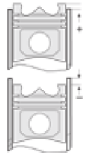
**Segman Seti**  
(Ring Set)



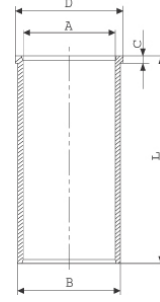
**Silindir Gömleği**  
(Liner)



**Silindir Kit**  
(Assembly Set)



**Piston - Blok Montaj**  
**Yüksekliği**  
(Piston - Block  
Assembly Height)



**Flanş Çapı Küçük**  
(Small Flange Diameter)

14-020911-00 D

B : 93.000

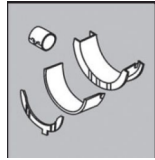
L : 165.000

D : 94.500

C : 5.000

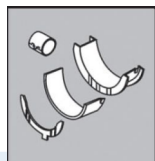
Dış Çap 0,50 mm Farklı  
Yarı Mamul (Outside  
Diameter 0.50 mm  
Different Semi Products)

**Ana Yatak**  
(Main Bearing)



H1018/5 STD

**Kol Yatak**  
(Arm Bed)



71-4066/4 STD

**Sil. Kapak. Conta**  
(Cylinder Head Gasket)



AA5940

