



HYUNDAI - Ø 91,1

87-71175-STD

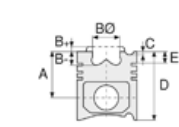


Motor Özellikleri
(Engine Specifications)

İmalatçı (Manufacturer):
HYUNDAI
Çap (Diameter): Ø 91,1
FM Grup No: 3632

D4BB

4 Sil. Dizel 2477cc 57-59
Kw/78-80 Ps 21:1
H 100 2.5 TD, H1 2.5 TD
1994...



Piston Ölçüleri
(Piston Dimensions)

A : 48.700
B- : 3.200
C1 : 1.900
C2 : 2.500
D : 88.700
E : 16.500

Pim : 29 x 75



Piston Özellikleri
(Piston Features)

Çelik Plaka
(Steel Strut)
Gözarası Konik
(Conical Eye Gap)



Piston Parça No
(Piston Part No)

87-850100-02
87-71175-STD

87-850107-02
87-71175-0,50

87-850100-03
87-71175-STD1
0,20 mm Kısa (Short)

87-850107-03
87-71175-0,501
0,20 mm Kısa (Short)



Segman Seti
(Ring Set)

06-850100-00-STD
06-850107-00-0,50 mm

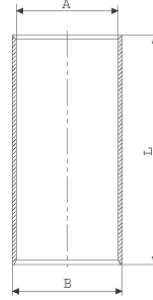
3.000 CRP KV1
2.000 P F14
3.000 CRP GOE

Yağ Segmanı Matkap Delik
(Oil Ring Drill Hole)



Silindir Gömleği
(Liner)

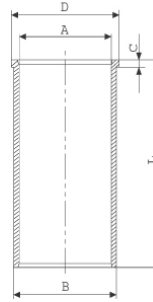
14-015590-00-D
B : 94.130
L : 164.500



14-015591-00-D
B : 94.630
L : 164.500

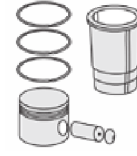
Dış Çap 0,50 mm Farklı
(Outside Diameter
0,50 mm Different)

14-028400-00-D
B : 94.130
L : 164.750
D : 96.000
C : 5.000

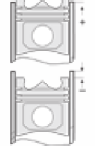


14-028401-00-D
B : 94.630
L : 164.750
D : 96.500
C : 5.000

Dış Çap 0,50 mm Farklı
(Outside Diameter
0,50 mm Different)



Silindir Kit
(Assembly Set)



Piston - Blok Montaj
Yüksekliği
(Piston - Block
Assembly Height)

1.45mm Conta (Gasket)
+0,562/+0,620

1,50 mm Conta (Gasket)
+0,620/+0,680

1,55mm Conta (Gasket)
+0,680/+0,774





HYUNDAI - Ø 91,1

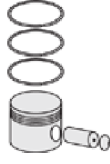
87-71175-STD



Motor Özellikleri
(Engine Specifications)



Piston Ölçüleri
(Piston Dimensions)



Piston Parça No
(Piston Part No)



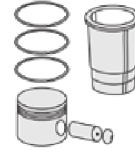
Segman Seti
(Ring Set)



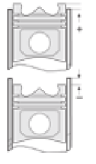
Silindir Gömleği
(Liner)

14-028402-00-D
B : 95.130
L : 164.750
D : 97.000
C : 6.000

Dış Çap 1,00 mm Farklı
(Outer Diameter
1.00 mm Different)

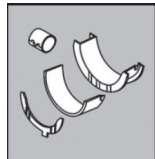


Silindir Kit
(Assembly Set)



Piston - Blok Montaj
Yüksekliği
(Piston - Block
Assembly Height)

KOL YATAK
(ARM BED)



01-4191/4 STD

SİL. KAPAK. CONTA
(CYLINDER HEAD GASKET)



DS130

