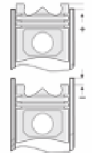
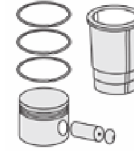
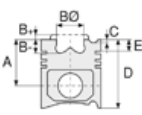
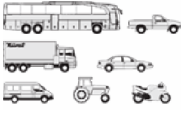




CUMMINS - BMC - Ø 107

87-73374-STD



Motor Özellikleri
(Engine Specifications)

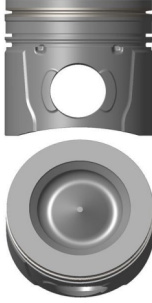
İmalatçı (Manufacturer):
Cummins-BMC
Çap (Diameter): 107
FM Grup No: 2129

ISB 4.5L Euro 5 /
ISB 6.7L Euro 5
6 Sil. Dizel 6700cc
94-239KW-133-325PS
APRON (NEOPORT),
BMC OTOBUS, LF-CF
SERISI, OTOKAR
OTOBUS
2014....

Piston Ölçüleri
(Piston Dimensions)

A : 69.400
B- : 18.300
BØ : 60.900
D : 103.300
E : 8.000

Pim: 40 x 90



Piston Özellikleri
(Piston Features)

Segman Taşıyıcı
(Ring Carrier)
Soğutma Kanallı
(Coolin Gallery)
Yağ Püskürtme Oyuğu
(Oil Jet Cut-out)
Gözarası Konik
(Conical Eye Gap)

Piston Parça No
(Piston Part No)

87-821100-02
87-73374-STD
87-821107-02
87-73374 0,50

Segman Seti
(Ring Set)

06-821100-00-STD
06-821107-00 0,50 mm
3.000 CKS KV1
2.500 P F14
3.500 CR STD

Silindir Gömleği
(Liner)

Silindir Kit
(Assembly Set)

Piston - Blok Montaj
Yüksekliği
(Piston - Block
Assembly Height)

