



CUMMINS - Ø 107

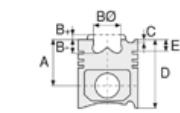
87-73375-STD



Motor Özellikleri
(Engine Specifications)

İmalatçı (Manufacturer):
Cummins
Çap (Diameter): 107
FM Grup No: 2122

QSB 6,7 - QSM 6,7
6 Sil. Dizel 6750cc
97-205Kw/132-279 Ps
İŞ MAKİNASI (Heavy
Machinery)
2007...



Piston Ölçüleri
(Piston Dimensions)

A : 69.400
B - : 12.800
BØ : 79.229
D : 103.300
E : 8.500

Pim: 40 x 90



Piston Özellikleri
(Piston Features)

Segman Taşıyıcı
(Ring Carrier)
Soğutma Kanallı
(Coolin Gallery)
Yağ Püskürtme Oyuğu
(Oil Jet Cut-out)
Gözarası Konik
(Conical Eye Gap)



Piston Parça No
(Piston Part No)

87-821000-22
87-73375-STD
87-821007-22
87-73375 0,50
87-821007-23
87-73375 0,501
0,20 mm Kısa (Short)



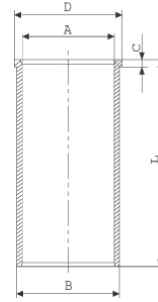
Segman Seti
(Ring Set)

06-821000-00-STD
06-821007-00 0,50 mm
3.000 CR KV1
2.500 CR KV1
3.500 CR GOE



Silindir Gömleği
(Liner)

14-022100-00-D
B : 110.000
L : 202.000
D : 111.500
C : 5.000

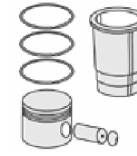


14-022101-00-D
B : 110.500
L : 202.000
D : 112.000
C : 5.500

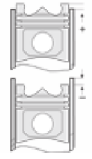
Dış Çap 0,50 mm Farklı
(Outer Diameter
0,50 mm Different)

14-022102-00-D
B : 111.000
L : 202.000
D : 112.500
C : 6.000

Dış Çap 1,00 mm Farklı
(Outer Diameter
1.00 mm Different)



Silindir Kit
(Assembly Set)



Piston - Blok Montaj
Yüksekliği
(Piston - Block
Assembly Height)

+0,28

+0,52

