



MITSUBISHI - Ø 91,1

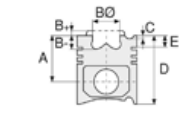
87-73411-STD



Motor Özellikleri
(Engine Specifications)

İmalatçı (Manufacturer):
MITSUBISHI
Çap (Diameter): Ø 91,1
FM Grup No: 6019

4D56 TDI Euro4 C.Rail
4 Sil. Dizel 2477cc
85/100/123
Kw (115/136/167 Ps) DI-D
L200
2006...



Piston Ölçüleri
(Piston Dimensions)

A : 48.250
B- : 18.900
BØ : 44.000
C1 : 2.000
C2 : 2.500
D : 78.250
E : 12.600

Pim : 32 x 75



Piston Özellikleri
(Piston Features)

Segman Taşıyıcı
(Ring Carrier)
Sert Anotlama
(Hard Anodizing)
Soğutma Kanallı
(Cooling Gallery)
Yağ Püskürtme Oyuğu
(Oil Jet Cut-Out)
Gözarası Konik
(Conical Eye Gap)



Piston Parça No
(Piston Part No)

87-873400-02
87-73411-STD
1. ve 3. Silindir (Cylinder)
87-873407-02
87-73411-050

87-873400-12
87-73412-STD
2. ve 4. Silindir (Cylinder)

87-873407-12
87-73412-050

87-873400-03
87-73411-STD1
0,20 mm Kısa (Short)

87-873407-03
87-73411-0,501
0,20 mm Kısa (Short)

87-873400-13
87-73412-STD1
0,20 mm Kısa (Short)

87-873407-13
87-73412-0,501
0,20 mm Kısa (Short)

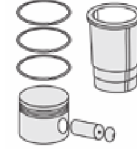


Segman Seti
(Ring Set)

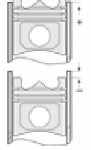
06-873400-00-STD
06-873407-00-0,50 mm
2.554 NT ST
2.054 CR KV1
4.000 NT ST



Silindir Gömleği
(Liner)



Silindir Kit
(Assembly Set)



Piston - Blok Montaj
Yüksekliği
(Piston - Block
Assembly Height)

0,95 mm Conta İle
(With Gasket)

0,25 / 0,30

1,00 mm Conta İle
(With Gasket)

0,30 / 0,40

1,05 mm Conta İle
(With Gasket)

0,40 / 0,45

