



MITSUBISHI - Ø 95

86-73420-STD



**Motor Özellikleri**  
(Engine Specifications)

İmalatçı (Manufacturer):  
MITSUBISHI  
Çap (Diameter): Ø 95  
FM Grup No: 6031

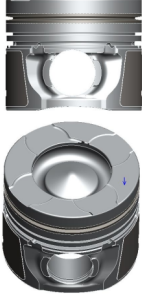
**4M42**

4 Sil. Dizel 2977cc 97  
KW-132 PS FE 730 EURO 4,  
FE 839, FUSO CANTER  
2005...

**Piston Ölçüleri**  
(Piston Dimensions)

A : 51.000  
B- : 17.000  
C1 : 1.200  
C2 : 0.350  
D : 77.000  
E : 12.050

Pim : 32 x 80



**Piston Özellikleri**  
(Piston Features)

Segman Taşıyıcı  
(Ring Carrier)  
Soğutma Kanallı  
(Cooling Gallery)  
Yağ Püskürtme Oyuğu  
(Oil Jet Cut-Out)



**Piston Parça No**  
(Piston Part No)

86-73420-STD  
86-73420-STD  
86-73420-0,50  
86-73420-0,50

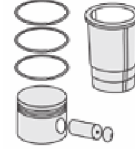


**Segman Seti**  
(Ring Set)

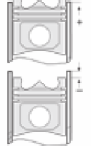
2.500  
2.000  
3.000



**Silindir Gömleği**  
(Liner)



**Silindir Kit**  
(Assembly Set)

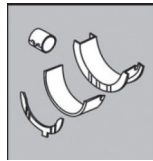


**Piston - Blok Montaj**  
**Yüksekliği**  
(Piston - Block  
Assembly Height)

1 Çentik Conta  
0,67/0,73 mm ile  
(With Notch Gasket)  
-0,03/-0,11  
2 Çentik Conta  
0,72/0,78 mm ile  
(With Notch Gasket)  
-0,05/-0,03  
3 Çentik Conta  
0,77/0,83 mm ile  
(With Notch Gasket)  
-0,13/-0,05  
4 Çentik Conta  
0,82/0,88 mm ile  
(With Notch Gasket)  
-0,23/-0,15

**ANA YATAK**  
(MAIN BEARING)

H1247/5 STD



**KOL YATAK**  
(ARM BED)

71-4567/4 STD

