



CUMMINS - Ø 114

87-70419-STD



Motor Özellikleri
(Engine Specifications)

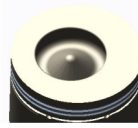
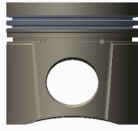
İmalatçı (Manufacturer):
Cummins
Çap (Diameter): 114
FM Grup No: 2107

6CTAA 8,3
6 Sil. Dizel 8267cc
194 Kw (263PS) 16:1
2626 FORD CARGO
KAMYON (Ford Cargo
Truck), 270-26
FATİH KAMYON
(Fatih Truck)

Piston Ölçüleri
(Piston Dimensions)

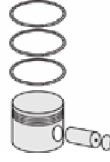
A : 78.820
B- : 25.430
BØ : 60.000
BX : 5.500
D : 120.320
E : 14.320

Pim: 45 x 91,1



Piston Özellikleri
(Piston Features)

Çift Segman Taşıyıcı
Gözarası Konik
(Double Ring Carrier
Conical Eye Gap)



Piston Parça No
(Piston Part No)

87-155600-22
87-70419-STD



Segman Seti
(Ring Set)

06-155600-10-STD

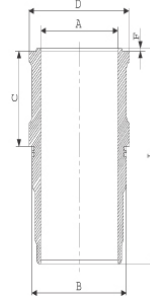
3.500 CRP KV1
3.000 P F14
4.000 CR STD

Goetze® LKZ-Ring®

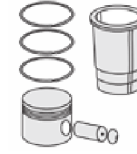


Silindir Gömleği
(Liner)

14-746260-10-WH
B : 125.685
L : 238.370
D : 130.948
C : 123.060
F : 1.250

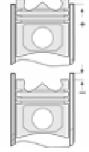


O-RİNG BİLGİ
50-350476-00/0
1x 120*124*4 FPM



Silindir Kit
(Assembly Set)

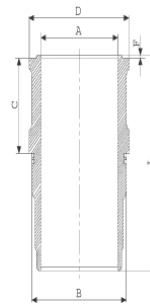
89-155600-82-STD
89-70419-STD



Piston - Blok Montaj
Yüksekliği
(Piston - Block
Assembly Height)

+0,20 / +0,50

14-745340-00-WH
B : 125.685
L : 238.350
D : 133.000
C : 123.050
F : 1.250



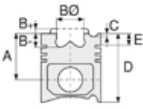
O-RİNG BİLGİ
50-350476-00/0
1x 120*124*4 FPM

89-155600-62-STD
89-70419-STD

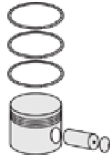




Motor Özellikleri
(Engine Specifications)



Piston Ölçüleri
(Piston Dimensions)



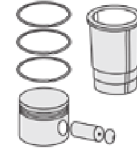
Piston Parça No
(Piston Part No)



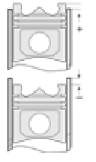
Segman Seti
(Ring Set)



Silindir Gömleği
(Liner)

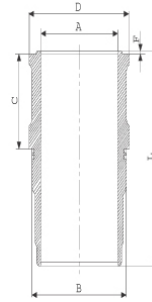


Silindir Kit
(Assembly Set)



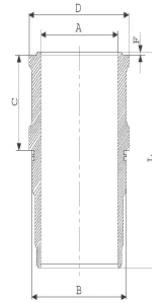
Piston - Blok Montaj
Yüksekliği
(Piston - Block
Assembly Height)

14-740010-00-WH
B: 125.685
L: 238.370
D: 130.948
C: 123.060
F: 1.250



O-RİNG BİLGİ
50-350476-00/0
1x 120*124*4 FPM

14-740020-00-WH
B: 125.685
L: 235.370
D: 130.948
C: 123.039
F: 1.250

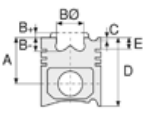


3,00mm Kısa (3,00mm
Short)

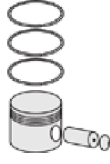




Motor Özellikleri
(Engine Specifications)



Piston Ölçüleri
(Piston Dimensions)



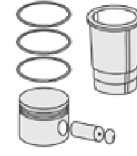
Piston Parça No
(Piston Part No)



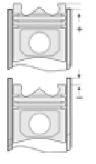
Segman Seti
(Ring Set)



Silindir Gömleği
(Liner)



Silindir Kit
(Assembly Set)

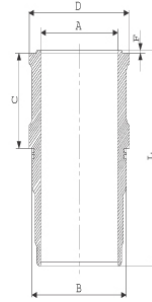


Piston - Blok Montaj
Yüksekliği
(Piston - Block
Assembly Height)

14-740030-00-WH
B : 125.685
L : 238.370
D : 131.200
C : 124.250
F : 1.250

C:1,20mm Uzun
(1,20mm Long)

14-740040-00-WH
B : 125.685
L : 234.120
D : 131.200
C : 124.250
F : 1.250



C:1,20mm Uzun
(1,20mm Long)

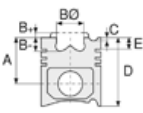
14-740050-00-WH
B : 125.685
L : 235.370
D : 131.200
C : 124.550
F : 1.250

C:1,50 mm uzun
(1,50mm Long)

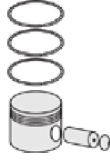




Motor Özellikleri
(Engine Specifications)



Piston Ölçüleri
(Piston Dimensions)



Piston Parça No
(Piston Part No)



Segman Seti
(Ring Set)

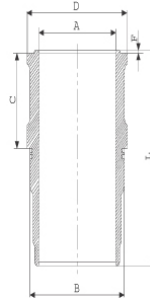


Silindir Gömleği
(Liner)

114-740080-00-WH
B : 125.685
L : 235.370
D : 131.200
C : 124.550
F : 1.250

C:1,50 mm uzun

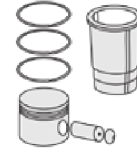
14-749630-00-WH
B : 125.685
L : 235.370
D : 130.948
C : 123.039
F : 1.250



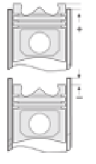
O-RING Bilgi
50-35047-60/0
1x 120*124*4 FPM

14-749632-00-WH
B : 125.685
L : 235.370
D : 130.948
C : 124.550
F : 1.250

C: 1,50 mm uzun
(1,50mm Long)



Silindir Kit
(Assembly Set)

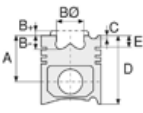


Piston - Blok Montaj
Yüksekliği
(Piston - Block
Assembly Height)

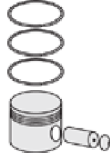




Motor Özellikleri
(Engine Specifications)



Piston Ölçüleri
(Piston Dimensions)



Piston Parça No
(Piston Part No)



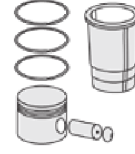
Segman Seti
(Ring Set)



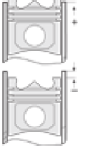
Silindir Gömleği
(Liner)

14-749633-00-WH
B : 125.685
L : 235.370
D : 130.948
C : 126.050
F : 1.250

C : 3,00 mm uzun
(1,20mm Long)



Silindir Kit
(Assembly Set)



Piston - Blok Montaj
Yüksekliği
(Piston - Block
Assembly Height)

