



HYUNDAI - Ø 91,1

87-71337-STD



Motor Özellikleri
(Engine Specifications)

İmalatçı (Manufacturer):
HYUNDAI
Çap (Diameter): Ø 91,1
FM Grup No: 3612

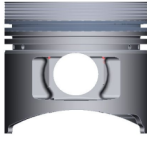
D4BH

4 Sil. Dizel 2500cc
Turbo intercool / Kia İle
Ortak Motor
(With Kia Common
Engine)
STAREX 2.5 TCI
2000 - 2002

Piston Ölçüleri
(Piston Dimensions)

A : 48.700
B- : 1.300
D : 88.700
E : 14.900

Pim : 29 x 75



Piston Özellikleri
(Piston Features)

Segman Taşıyıcı
(Ring Carrier)
Çelik Plaka
(Steel Strut)
Soğutma Kanallı
(Cooling Gallery)
Yağ Püskürtme Oyuğu
(Oil Jet Cut-Out)
Gözarası Konik
(Conical Eye Gap)

Piston Parça No
(Piston Part No)

87-862607-23
87-71337-0501
0,20 mm Kısa (Short)

87-862600-22
87-71337-STD
1. & 3. Silindir (Cylinder)

87-862607-22
87-71337-050

87-862600-23
87-71337-STD1
1 & 3 Silindir (Cylinder) -
0,20 mm Kısa (Short)

87-862607-43
87-71339-0501
0,20 mm Kısa (Short)

87-862600-42
87-71339-STD
2. & 4. Silindir (Cylinder)

87-862607-42
87-71339-050

87-862600-43
87-71339-STD1
2 & 4 Silindir (Cylinder) -
0,20 mm Kısa (Short)

Segman Seti
(Ring Set)

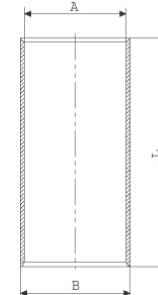
06-862600-00-STD
06-862607-00-0,50 mm

2.554 CRP KV1
2.054 CRP KV1
4.000 CRP GOE

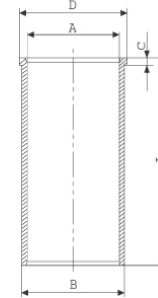


Silindir Gömleği
(Liner)

14-010370-00-D
B : 94.175
L : 167.000



14-028400-00-D
B : 94.130
L : 164.750
D : 96.000
C : 5.000



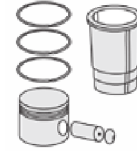
14-028401-00-D
B : 94.630
L : 164.750
D : 96.500
C : 5.000

Dış Çap 0,50 mm Farklı
(Outside Diameter
0,50 mm Different)

14-028402-00-D
B : 95.130
L : 164.750
D : 97.000
C : 6.000

Dış Çap 1,00 mm Farklı
(Outer Diameter
1.00 mm Different)

Silindir Kit
(Assembly Set)



Piston - Blok Montaj
Yüksekliği
(Piston - Block
Assembly Height)

+ 0,50

