



Motor Özellikleri
(Engine Specifications)

İmalatçı (Manufacturer):
FORD PKW
Çap (Diameter): 86,01
FM Grup No: 3119

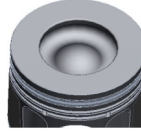
2.2L Duratorg
4 Sil. 2198cc 155 PS 15,5:1
Euro 5
TRANSİT 2.2 (YENİ)
2011....



Piston Ölçüleri
(Piston Dimensions)

A : 48.420
B- : 16.170
BØ : 49.040
D : 74.820
E : 8.610

Pim: 30 x 66,85



Piston Özellikleri
(Piston Features)

Segman Taşıyıcı
(Ring Carrier)
Soğutma Kanallı
(Coolin Gallery)
Yağ Püskürtme Oyuğu
(Oil Jet Cut-out)
Göz arası konik
(Conical Eye Gap)



Piston Parça No
(Piston Part No)

87-839500-52
87-72755-STD
87-839505-52
87-72755 0,25

87-839507-52
87-72755-050

87-839511-52
87-72755 1,00

87-839500-53
87-72755-STD1
0,20 mm Kısa (Short)

87-839507-53
87-72755-0501
0,20 mm kısa (Short)

87-839511-53
87-72755-1.001
0,20 mm Kısa (Short)

87-839500-54
87-72755-STD2
0,40 mm Kısa (Short)

87-839507-54
87-72755-0502
0,40 mm Kısa (Short)

87-839511-54
87-72755-1.001
0,40 mm kısa (Short)



Segman Seti
(Ring Set)

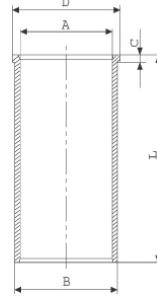
06-839500-00-STD
06-839505-00 0,25 mm
06-839507-00 0,50 mm
06-839511-00 1,00 mm

2.000 CKP KV1
2.000 P GOE
2.000 NT ST



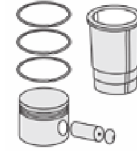
Silindir Gömleği
(Liner)

14-022110-00-D
B : 89.000
L : 165.000
D : 90.500
C : 5.000

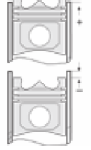


14-022111-00-D
B : 89.500
L : 165.000
D : 91.000
C : 5.500

Dış çap 0,50 mm farklı
(Outer Diameter
0,50mm Different)



Silindir Kit
(Assembly Set)



Piston - Blok Montaj
Yüksekliği
(Piston - Block
Assembly Height)





FORD PKW - Ø 86,01

87-72755-STD



Motor Özellikleri
(Engine Specifications)



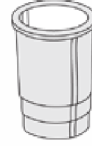
Piston Ölçüleri
(Piston Dimensions)



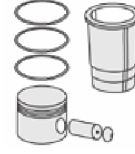
Piston Parça No
(Piston Part No)



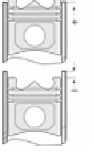
Segman Seti
(Ring Set)



Silindir Gömleği
(Liner)

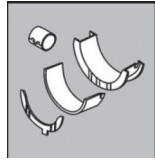


Silindir Kit
(Assembly Set)



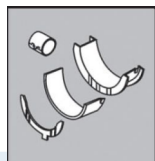
Piston - Blok Montaj
Yüksekliği
(Piston - Block
Assembly Height)

Ana Yatak
(Main Bearing)



H1018/5 STD

Kol Yatak
(Connecting Rod Bearing)



71-4066/4 STD

Sil. Kapak. Conta
(Cylinder Head Gasket)



AH6390

