



OPEL - Ø 75

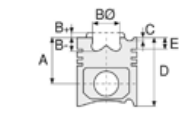
87-73455-STD



Motor Özellikleri
(Engine Specifications)

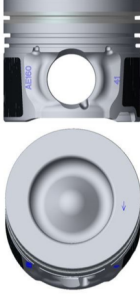
İmalatçı (Manufacturer):
OPEL
Çap (Diameter): Ø 75
FM Grup No: 6682

B16DT-B16DTH
4 Sil. Dizel 1568cc
81-88 KW/110-120PS
CROSSLAND X,
GRANDLAND X
2015....



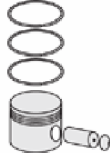
Piston Ölçüleri
(Piston Dimensions)

A : 41.700
B- : 13.150
BØ : 45.500
BX : 0.800
BY : 0.700
D : 63.700
E : 8.750



Piston Özellikleri
(Piston Features)

Segman Taşıyıcı
(Ring Carrier)
Soğutma Kanallı
(Coolin Gallery)
Yağ Püskürtme Oyuğu
(Oil Jet Cut-out)
Gözarası Konik
(Conical Eye Gap)



Piston Parça No
(Piston Part No)

87-879900-02
87-73455-STD

87-879907-02
87-73455 0,50



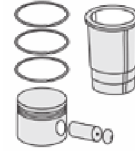
Segman Seti
(Ring Set)

06-879900-00-STD
06-879907-00 0,50 mm

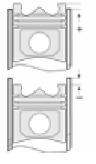
2.000 CKP KV4
1.950 P F14
2.000 CRP KV1



Silindir Gömleği
(Liner)

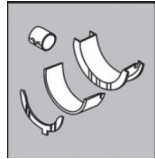


Silindir Kit
(Assembly Set)



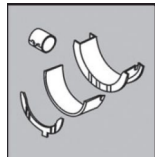
Piston - Blok Montaj
Yüksekliği
(Piston - Block
Assembly Height)

Ana Yatak
(Main Bearing)



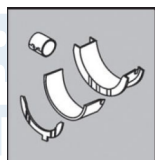
H1066/5

Kenar Ay Yatak
(Thrust Washer)



A217/2

Kol Burcu
(Small End Bushing)



55-4102

