



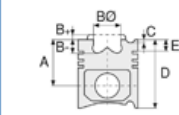
Motor Özellikleri
(Engine Specifications)

İmalatçı (Manufacturer):
SAAB SCANIA
Çap (Diameter): Ø 127
FM Grup No: 7574

DC 11.03 Euro3
6 Sil. Dizel 10640cc
250 Kw(340 Ps) 18:1
Turbo, Intercooler 24 v
k114, P114, R114, T114
1996....

DC 11.04 Euro3 /
DC 11.09 Euro3
6 Sil. Dizel 10640cc
280 Kw(381 PS) 18:1
Turbo, Intercooler 24 v
Century 12.35, k114,
P114, R114, T114
1996....

DC 9.19 / DC 9.20
5 Sil. Dizel 169 kw /
230 PS
DOOSAN ile Ortak Motor
(Common Engine With
DOOSAN)
P 230-P 270



Piston Ölçüleri
(Piston Dimensions)

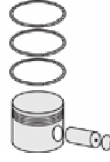
A : 92.040
B - : 21.150
BØ : 75.100
D : 136.040
E : 14.200

Pim: 54 x 106



Piston Özellikleri
(Piston Features)

Segman Taşıyıcı
(Ring Carrier)
Yağ Püskürtme Oyuğu
(Oil Jet Cut-out)
Burçlu Piston
(Bushing Piston)
Gözarası Konik
(Conical Eye Gap)



Piston Parça No
(Piston Part No)

87-892350-42
87-73737-STD



Segman Seti
(Ring Set)

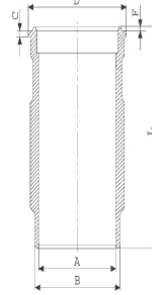
06-892350-20-STD
3.500 CK KV1
2.385 GOE
3.500 CR STD

Yağ Segmanı Matkap
Delikli / Goetze®
LKZ-Ring® (Oil Ring Drill
Perforated / Goetze®
LKZ-Ring®)

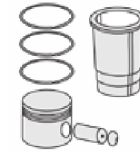


Silindir Gömleği
(Liner)

14-579940-00-WH
B : 139.000
L : 271.120
D : 150.000
C : 194.270
F : 0.850
R : 8.250

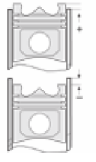


O-Ring Bilgi
(O-RING Information)
24-35054-60/O
1x 138*144.75 *4.6 FPM
1x 148*4 FPM



Silindir Kit
(Assembly Set)

89-892350-42-STD
89-73737-STD



Piston - Blok Montaj
Yüksekliği
(Piston - Block
Assembly Height)

87-892300-42
87-73737-STD A

06-892300-20-STD
3.500 CK KV1
2.385 P F14
3.500 CR STD

Goetze® LKZ-Ring® /
Yağ Segmanı Matkap
Delikli (Goetze®
LKZ-Ring® / Oil Ring Drill
Perforated)

14-579940-00-WH
O-Ring Bilgi
(O-RING Information)
24-35054-60/O
1x 138*144.75 *4.6 FPM
1x 148*4 FPM

89-892300-42-STD
89-73737-STD A

87-892600-62
87-73737-STD B

06-892600-20-STD
3.500 CK KV1
2.385 CRP F14
3.500 CK GOE

Goetze® LKZ-Ring® /
Yağ Segmanı Matkap
Delikli (Goetze®
LKZ-Ring® / Oil Ring Drill
Perforated)





Motor Özellikleri
(Engine Specifications)



Piston Ölçüleri
(Piston Dimensions)



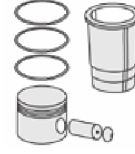
Piston Parça No
(Piston Part No)



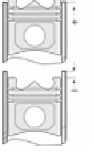
Segman Seti
(Ring Set)



Silindir Gömleği
(Liner)



Silindir Kit
(Assembly Set)



Piston - Blok Montaj
Yüksekliği
(Piston - Block
Assembly Height)

