



Motor Özellikleri
(Engine Specifications)

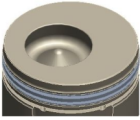
İmalatçı (Manufacturer):
Cummins
Çap (Diameter): 114
FM Grup No: 2108

6CTAA EURO1
6 Sil. Dizel 8298cc
160 Kw (214PS) 18:1
PRO 822

Piston Ölçüleri
(Piston Dimensions)

A : 79.020
B- : 25.000
BØ : 55.950
BX : 10.500
BY : 2.500
D : 120.520
E : 14.520

Pim: 45 x 91,1



Piston Özellikleri
(Piston Features)

Sert Anotlama
(Hard Anodizing)
Çift Segman Taşıyıcı
Gözarası Konik
(Double Ring Carrier
Conical Eye Gap)



Piston Parça No
(Piston Part No)

87-155600-42
87-70427-STD

87-155600-43
87-70427-STD1
0,20mm Kısa (Short)

87-155600-44
87-70427-STD2
0,40mm Kısa (Short)



Segman Seti
(Ring Set)

06-155600-10-STD

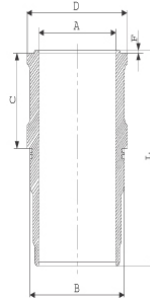
3.500 CRP KV1
3.000 P F14
4.000 CR STD

Goetze® LKZ-Ring®



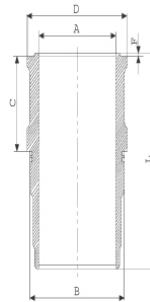
Silindir Gömleği
(Liner)

14-749630-00-WH
B : 125.685
L : 235.370
D : 130.948
C : 123.039
F : 1.250

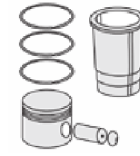


O-RING BİLGİ
(O-Ring Information)
50-35047-60/O
1x 120*124*4 FPM

14-740020-00-WH
B : 125.685
L : 234.120
D : 130.948
C : 123.039
F : 1.250

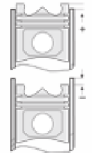


3,00mm Kısa (Short)



Silindir Kit
(Assembly Set)

89-155600-32-STD
89-70416-STD



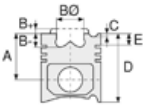
Piston - Blok Montaj
Yüksekliği
(Piston - Block
Assembly Height)

+0,33 / +0,66

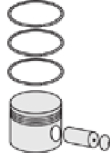




Motor Özellikleri
(Engine Specifications)



Piston Ölçüleri
(Piston Dimensions)



Piston Parça No
(Piston Part No)

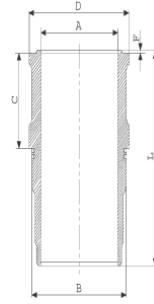


Segman Seti
(Ring Set)

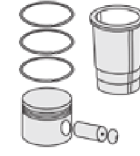


Silindir Gömleği
(Liner)

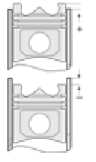
14-740040-00-WH
B : 125.685
L : 234.120
D : 131.200
C : 124.250
F : 1.250



C:1,20mm Uzun (Long)



Silindir Kit
(Assembly Set)



Piston - Blok Montaj
Yüksekliği
(Piston - Block
Assembly Height)

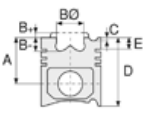
14-740080-00-WH
B : 125.685
L : 235.370
D : 131.200
C : 124.550
F : 1.250

C:1,50 mm Uzun (Long)

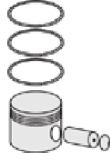




Motor Özellikleri
(Engine Specifications)



Piston Ölçüleri
(Piston Dimensions)



Piston Parça No
(Piston Part No)

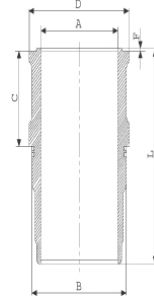


Segman Seti
(Ring Set)

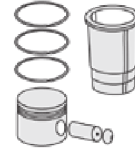


Silindir Gömleği
(Liner)

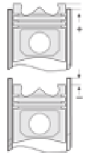
14-749640-00-WH
B : 125.685
L : 235.370
D : 131.200
C : 124.250
F : 1.250



C:1,20 mm Uzun (Long)



Silindir Kit
(Assembly Set)



Piston - Blok Montaj
Yüksekliği
(Piston - Block
Assembly Height)

