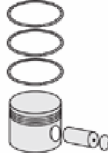




VOLVO - Ø 144

87-73694-STDA



Motor Özellikleri
(Engine Specifications)

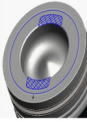
İmalatçı (Manufacturer):
VOLVO
Çap (Diameter): Ø 144
FM Grup No: 880153

TD162FL
6 Sil. Dizel 16120cc
357 KW(485 PS)
F16
1987....

Piston Ölçüleri
(Piston Dimensions)

A : 110.300
B - : 29.700
BØ : 82.000
D : 163.300
E : 16.100

Pim: 60 x 120,3



Piston Özellikleri
(Piston Features)

Segman Taşıyıcı
(Ring Carrier)
Sert Anotlama
(Hard Anodizing)
Soğutma Kanallı
(Coolin Gallery)
Gözarası Konik
(Conical Eye Gap)

Piston Parça No
(Piston Part No)

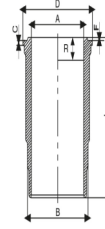
87-833300-12
87-73694-STDA

Segman Seti
(Ring Set)

06-833300-80-STD
4.000 CKS KV4
3.500 CKS IKA
5.000 CR STD

Silindir Gömleği
(Liner)

14-451020-00-WH
B : 158.950
L : 315.000
D : 171.950
C : 13.080
F : 2.000
R : 17.000



O-Ring Bilgi
(O-Ring Information)
24-35043-90/O
1x 169*2,4 FPM
1x 155*2,5 EPDM
2x 157,6*5,8 FPM
1x 157,6*5,8 FPM

Silindir Kit
(Assembly Set)

89-833300-12
89-73694-STDA

Piston - Blok Montaj
Yüksekliği
(Piston - Block
Assembly Height)

-0,90/-1,50



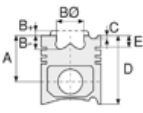


VOLVO - Ø 144

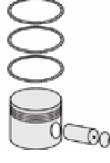
87-73694-STD



Motor Özellikleri
(Engine Specifications)



Piston Ölçüleri
(Piston Dimensions)



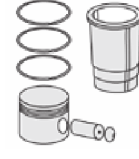
Piston Parça No
(Piston Part No)



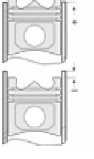
Segman Seti
(Ring Set)



Silindir Gömleği
(Liner)

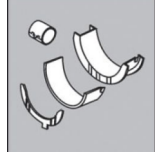


Silindir Kit
(Assembly Set)



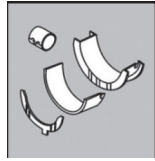
Piston - Blok Montaj
Yüksekliği
(Piston - Block
Assembly Height)

ANA YATAK
(MAIN BEARING)



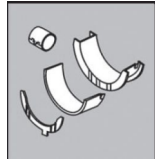
H1083/7 STD

KOL YATAK
(ARM BED)



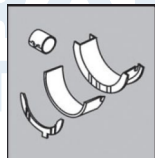
71-4219/6 STD

AY YATAK
(THRUST WASHER)



A187/4 STD

KOL BURCU
(SMALL END BUSH)



55-4272 SEMI

