



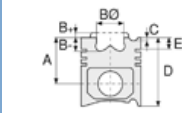
Motor Özellikleri
(Engine Specifications)

İmalatçı (Manufacturer):
SAAB SCANIA
Çap (Diameter): Ø 127
FM Grup No: 7516

DSC 12.01 EURO2
6 Sil. Dizel 11700cc
265/325 Kw (360/442 PS)
18:1
Turbocharged
Intercooled 24 Valve
R 164, R124 LA 400
1996....

DSC 12.02 EURO3
6 Sil. Dizel 11700cc
265/325 Kw (360/442 PS)
18:1
Turbocharged
Intercooled 24 Valve
R124 LA 400, R164
1996....

DSC 16.02 EURO3 V8
8 Sil. Dizel 15600cc
353/426 Kw (480/579 PS)
18:1
Turbocharged
Intercooled 32 Valve
R 164, R124 LA 400
1998 - 2002



Piston Ölçüleri
(Piston Dimensions)

A : 85.210
B- : 22.150
BØ : 78.000
D : 122.710
E : 14.020

Pim: 54 x 106



Piston Özellikleri
(Piston Features)

Yağ Püskürtme Oyuğu
(Oil Jet Cut-out)
Gözarası Konik
(Conical Eye Gap)



Piston Parça No
(Piston Part No)

87-892350-02
87-75002-STD
Çift Parçalı Piston
(Two Piece Piston)



Segman Seti
(Ring Set)

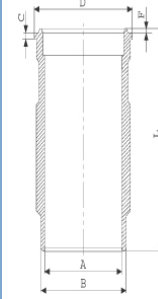
06-892350-20-STD
3.500 CK KV1
2.385 GOE
3.500 CR STD

Yağ Segmanı Matkap
Delikli / Goetze®
LKZ-Ring® (Oil Ring Drill
Perforated / Goetze®
LKZ-Ring®)

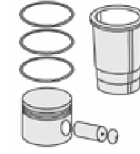


Silindir Gömleği
(Liner)

14-579940-00-WH
B : 139.000
L : 271.120
D : 150.000
C : 194.270
F : 0.850
R : 8.250

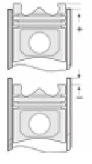


O-Ring Bilgi
(O-RING Information)
24-35042-60/O
1x 138*144.75*4.6 FPM
1x 148*4 FPM



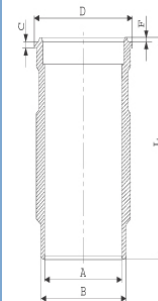
Silindir Kit
(Assembly Set)

89-892350-02-STD
89-75002-STD



Piston - Blok Montaj
Yüksekliği
(Piston - Block
Assembly Height)

14-570030-00-WH
B : 140.000
L : 271.120
D : 151.000
C : 194.270
F : 0.850
R : 8.250



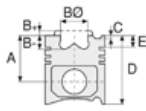
O-Ring Bilgi
(O-RING Information)
24-35054-80/O
1x 147,5*4 EPDM PEROX
1x 138*144,75*4,6 FPM

89-892350-12-STD
89-75002-STDB





Motor Özellikleri
(Engine Specifications)



Piston Ölçüleri
(Piston Dimensions)



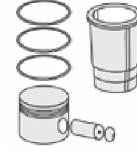
Piston Parça No
(Piston Part No)



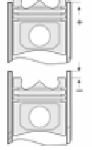
Segman Seti
(Ring Set)



Silindir Gömleği
(Liner)



Silindir Kit
(Assembly Set)



Piston - Blok Montaj
Yüksekliği
(Piston - Block
Assembly Height)




89-892350-52-STD
89-75002-STDH

15-570080-00-WH
B : 139.000
L : 271.120
D : 151.000
C : 194.270
F : 0.850
R : 8.250

89-892350-14-STD
89-75002-STDH

O-Ring Bilgi
(O-Ring Infotmation)
24-35050-30/O
1x 138*144,75*4,6 FPM
1x 148*4 FPM

87-892350-03
87-75002-STD1
0,20 mm Kısa (Short)

06-892300-20-STD
3.500  CK KV1
2.385  P F14
3.500  CR STD




87-892300-02
87-75002-STDD

Goetze® LKZ-Ring® /
Yağ Segmanı Matkap
Delikli (Goetze® LKZ-Ring®
/ Oil Ring Drill
Perforated)

14-579940-00-WH
O-Ring Bilgi
(O-Ring Information)
24-35042-60/O
1x 138*144.75 *4.6 FPM
1x 148*4 FPM

89-892300-02-STD
89-75002-STDD

87-892600-32
87-75002-STDJ

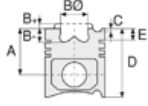
06-892600-20-STD
3.500  CK KV1
2.385  CRP F14
3.500  CK GOE

Goetze® LKZ-Ring® /
Yağ Segmanı Matkap
Delikli (Goetze® LKZ-Ring®
/ Oil Ring Drill
Perforated)

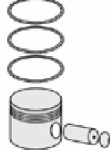




Motor Özellikleri
(Engine Specifications)



Piston Ölçüleri
(Piston Dimensions)



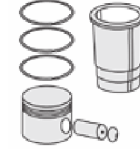
Piston Parça No
(Piston Part No)



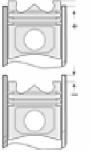
Segman Seti
(Ring Set)



Silindir Gömleği
(Liner)



Silindir Kit
(Assembly Set)



Piston - Blok Montaj
Yüksekliği
(Piston - Block
Assembly Height)

14-570031-00-WH
B : 140.000
L : 271.120
D : 151.500
C : 194.270
F : 0.850
R : 8.250

Flanş Çapı +0,50 Farklı
Çalışması (Flange
Diameter +0,50
Different Study)

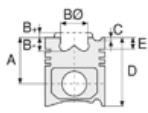
14-570032-00-WH
B : 140.000
L : 271.120
D : 152.000
C : 194.270
F : 0.850
R : 8.250

Flanş Çapı +1,00 Farklı
Çalışması (Flange
Diameter +1,00
Different Study)

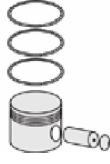




Motor Özellikleri
(Engine Specifications)



Piston Ölçüleri
(Piston Dimensions)



Piston Parça No
(Piston Part No)



Segman Seti
(Ring Set)



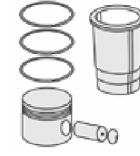
Silindir Gömleği
(Liner)

14-570101-00-WH
B : 139.000
L : 270.120
D : 150.500
C : 194.270
F : 0.850
R : 12.000

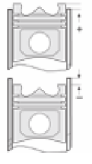
Flanş Çapı +0,50 Farklı
Çalışması (Flange
Diameter +0,50
Different Study)

14-570102-00-WH
B : 139.000
L : 271.120
D : 151.000
C : 194.270
F : 0.850
R : 12.000

Flanş Çapı +1,00 Farklı
Çalışması (Flange
Diameter +1,00
Different Study)



Silindir Kit
(Assembly Set)

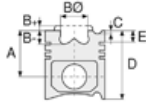


Piston - Blok Montaj
Yüksekliği
(Piston - Block
Assembly Height)

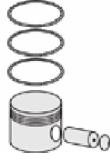




Motor Özellikleri
(Engine Specifications)



Piston Ölçüleri
(Piston Dimensions)



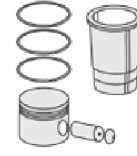
Piston Parça No
(Piston Part No)



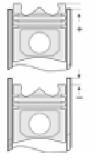
Segman Seti
(Ring Set)



Silindir Gömleği
(Liner)

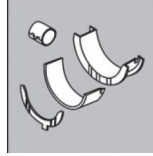


Silindir Kit
(Assembly Set)



Piston - Blok Montaj
Yüksekliği
(Piston - Block
Assembly Height)

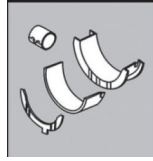
Ana Yatak
(Main Bed)



H1103/7 STD

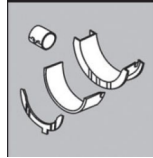
72-4072 STD

Kol Yatak
(Connecting Rod Bearing)



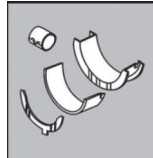
71-4860 STD

Ay Yatak
(Thrust Washer)



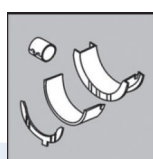
A232/4 STD

Eksantrik Yatak
(Camshaft Bearing)



N173/7 STD

Kol Burcu
(Small End Bushing)



55-4544 SEMI

Sil. Kapak. Conta
(Cylinder Head Gasket)



AH6550

