



DAF - Ø 130

87-75504-STD

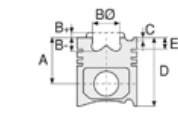


**Motor Özellikleri**  
(Engine Specifications)

İmalatçı (Manufacturer):  
DAF  
Çap (Diameter): 130  
FM Grup No: 2264

**Paccar MX340S2**  
**Euro 5**

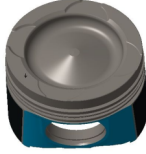
6 Sil. Dizel 12900cc  
410/460 Hp  
XF105, CF85, SAFIR,  
SAFARI  
2010...



**Piston Ölçüleri**  
(Piston Dimensions)

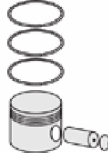
A : 81.900  
B- : 17.500  
BØ : 91.000  
C1 : 0.800  
C2 : 2.000  
D : 120.400  
E : 16.000

Pim: 55 x 81,9



**Piston Özellikleri**  
(Piston Features)

Soğutma Kanallı  
(Coolin Gallery)  
Gözarası Konik  
(Conical Eye Gap)



**Piston Parça No**  
(Piston Part No)

87-841600-22  
87-75504-STD  
Monosteel (Çelik Piston)



**Segman Seti**  
(Ring Set)

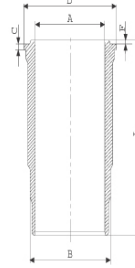
06-841600-40-STD  
4.000 KKS KVI  
3.160 NT IKA  
4.000 KKS GOE

Goetze® LKZ-Ring® /  
Yağ segmanı matkap  
delikli (Oil Ring Drill  
Perforated)



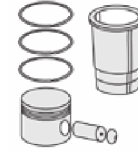
**Silindir Gömleği**  
(Liner)

14-451230-20-WH  
B : 146.000  
L : 268.000  
D : 157.600  
C : 12.000  
F : 0.950  
R : 15.000



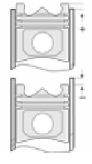
KURUM GİDERME  
RİNGLİ (With Scraper  
Rings)  
/O-RING BİLGİ  
(O-Ring Information) /  
Euro 6 Malzemeli  
(With Euro 6 Material)  
24-35048-10/O  
2x 146\*157,4\*5 EPDM  
1x 146\*157,4\*5 FPM  
1x139 EPDM

14-451231-20-WH  
B : 146.000  
L : 268.000  
D : 157.600  
C : 12.260  
F : 0.950  
R : 15.000



**Silindir Kit**  
(Assembly Set)

89-841600-22-STD  
89-75504-STD



**Piston - Blok Montaj**  
**Yüksekliği**  
(Piston - Block  
Assembly Height)

0 / -0,20



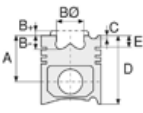


DAF - Ø 130

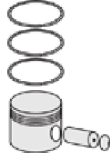
87-75504-STD



**Motor Özellikleri**  
(Engine Specifications)



**Piston Ölçüleri**  
(Piston Dimensions)



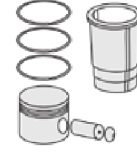
**Piston Parça No**  
(Piston Part No)



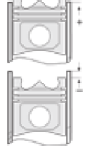
**Segman Seti**  
(Ring Set)



**Silindir Gömleği**  
(Liner)



**Silindir Kit**  
(Assembly Set)



**Piston - Blok Montaj**  
Yüksekliği  
(Piston - Block  
Assembly Height)

FLANŞ KALINLIĞI  
(Flange Width)  
0,25MM FARKLI  
(0,25mm Different)/  
Euro 6 Malzemeli  
(With Euro 6 Material)

14-451232-20-WH  
B : 146.000  
L : 268.000  
D : 157.600  
C : 12.500  
F : 0.950  
R : 15.000

FLANŞ KALINLIĞI  
(Flange Width)  
0,50 MM FARKLI  
(0,50mm Different) /  
Euro 6 Malzemeli  
(With Euro 6 Material)  
24-35048-10/0

14-451233-20-WH  
B : 146.000  
L : 268.000  
D : 158.100  
C : 12.510  
F : 0.950  
R : 15.000

FLANŞ KALINLIĞI  
(Flange Width)  
+BOĞAZ ALT ÇAPI  
(Centering Diameter  
Under Flange)  
+ FLANŞ ÇAPI (Flange  
Diameter)  
+0,50 FARKLI  
(0,50mm Different)  
/Euro 6 Malzemeli  
(With Euro 6 Material)



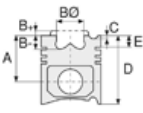


DAF - Ø 130

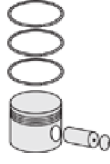
87-75504-STD



**Motor Özellikleri**  
(Engine Specifications)



**Piston Ölçüleri**  
(Piston Dimensions)



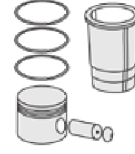
**Piston Parça No**  
(Piston Part No)



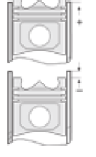
**Segman Seti**  
(Ring Set)



**Silindir Gömleği**  
(Liner)

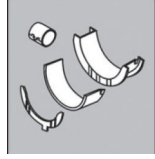


**Silindir Kit**  
(Assembly Set)



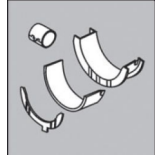
**Piston - Blok Montaj**  
**Yüksekliği**  
(Piston - Block  
Assembly Height)

**Ana Yatak**  
(Main Bearing)



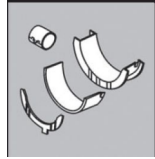
72-4788 STD

**Ay Yatak**  
(Thrust Washer)



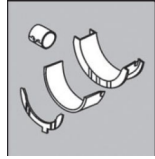
A293/4 STD

**Kol Yatak**  
(Connecting Rod Bearing)



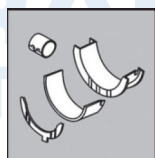
71-4787 STD

**Eksantrik Yatak**  
(Camshaft Bearing)



N195/7 STD

**Kol Burcu**  
(Small End Bushing)



55-4790 SEMI

