



KHD - Ø 94

87-71316-STD A



Motor Özellikleri
(Engine Specifications)

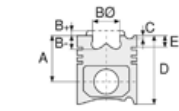
İmalatçı (Manufacturer):
KHD
Çap (Diameter): Ø 94
FM Grup No: 450107

BF 3 M 2011 Euro2
3 Sil. Dizel 2330cc 48,5
Kw(66 Ps) 17,5:1 Turbo
ENDÜSTRİYEL (Industrial)
2004...

BF 4 M 2011 Euro2
4 Sil. Dizel 3110cc 65
Kw(88 Ps) 17,5:1 Turbo
ENDÜSTRİYEL (Industrial)
2004...

BF 3 L 2011 Euro2
3 Sil. Dizel 2330cc 45
Kw(61 Ps) 17,5:1 Turbo
ENDÜSTRİYEL (Industrial)
2004...

BF 4 L 2011 Euro2
4 Sil. Dizel 3110cc 58
Kw(79 Ps) 17,5:1 Turbo
ENDÜSTRİYEL (Industrial)
2004...



Piston Ölçüleri
(Piston Dimensions)

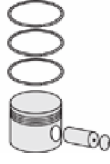
A : 51.700
B - : 17.600
BØ : 52.000
BX : 1.000
BY : 1.000
D : 81.650
E : 9.100

Pim : 30 x 68



Piston Özellikleri
(Piston Features)

Segman Taşıyıcı
(Ring Carrier)
Soğutma Kanallı
(Cooling Gallery)
Gözarası Düz
(Flat Eye Gap)



Piston Parça No
(Piston Part No)

87-870600-32
87-71316-STD A
87-870607-32
87-71316-050A



Segman Seti
(Ring Set)

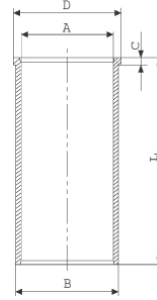
06-870600-20-STD
06-870607-20-0,50 mm
3.000 CK KV1
2.000 F14
3.000 CR STD

Goetze® LKZ-Ring®
Yağ Segmanı Matkap Delik
(Oil Ring Drill Hole)



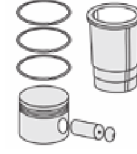
Silindir Gömleği
(Liner)

14-021750-00-D
B : 97.000
L : 175.000
D : 98.500
C : 5.000

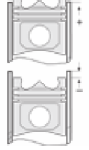


14-021751-00 D
B: 97,500
L: 175,000
D: 99,000
C: 5,500

Dış çap 0,50 mm farklı
(Outer Diameter
0,50 mm Different)



Silindir Kit
(Assembly Set)



Piston - Blok Montaj
Yüksekliği
(Piston - Block
Assembly Height)

1 Kertik Conta İle
(With Notch Gasket)
0,51/0,69

2 Kertik Conta İle
(With Notch Gasket)
0,70 /0,76

3 Kertil Conta İle
(With Notch Gasket)
0,77/083

