



MAN - Ø 128

87-71542-STDB



Motor Özellikleri
(Engine Specifications)

İmalatçı (Manufacturer):
MAN
Çap (Diameter): Ø 128
FM Grup No: 5453

D2840.LE2A,LE401,T

10 Sil. Dizel 18270cc
294 Kw(400PS) 15,5:1
TURBO,LLK
19.501, Endüstriyel, Marin
(Industrial, Marine)
1994 - 1997

**D2842.LE20, Le21,
LXE, MLE, T**

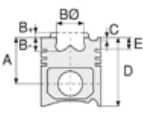
12 Sil. Dizel 21930cc
375-559 Kw(510-760 PS)
15,5:1
TURBO, LLK
19.501, Endüstriyel, Marin
(Industrial, Marine)
- 1974

D2842.LXF

12 Sil. Dizel 21930cc
735 Kw(1000 PS)
TURBO,LLK
Endüstriyel (Industrial)
- 1974

D2848.LE,T

8 Sil. Dizel 14620cc 15,5:1
TURBO, LLK
19.501, Endüstriyel, Marin
(Industrial, Marine)
- 1974



Piston Ölçüleri
(Piston Dimensions)

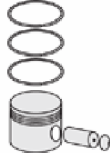
A : 81.300
B - : 30.000
BØ : 68.000
BX : 2.000
C1 : 1.200
D : 130.300
E : 18.800

Pim: 46 x 105



Piston Özellikleri
(Piston Features)

Segman Taşıyıcı
(Ring Carrier)
Yağ Püskürtme Oyuğu
(Oil Jet Cut-out)
Gözarası Düz
(Flat Eye Gap)



Piston Parça No
(Piston Part No)

87-283100-23
87-71542-STDB



Segman Seti
(Ring Set)

06-283100-40-STD

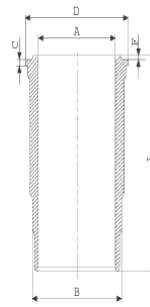
3.500 CR KV4
3.000 STD
5.000 CR STD



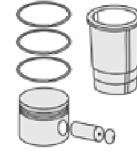
Silindir Gömleği
(Liner)

14-458210-00-WH

B : 144.500
L : 253.000
D : 153.800
C : 10.050
F : 1.000

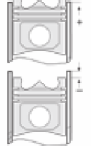


Dış Yüzeyi
Fosfat Kaplı
(Outer Surface
Phosphate Coated)
24-32448-70/O
2x 138*2,1 FPM
2x 144*4 FPM



Silindir Kit
(Assembly Set)

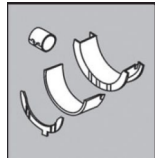
89-283100-23-STD
89-71542-STDB



Piston - Blok Montaj
Yüksekliği
(Piston - Block
Assembly Height)

+0,09 / + 0,39

KOL YATAK
(ARM BED)

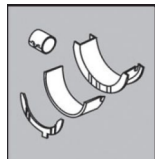


71-3638 STD

71-3289/2 STD

71-2965 STD

KOL BURCU
(SMALL END BUSH)



55-3328 SEMI

SİL. KAPAK. CONTA
(CYLINDER HEAD GASKET)



30-026235-10

