



FORD PKW - Ø 86,01

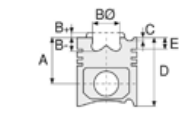
87-72755-STD



**Motor Özellikleri**  
(Engine Specifications)

İmalatçı (Manufacturer):  
FORD PKW  
Çap (Diameter): 86,01  
FM Grup No: 3119

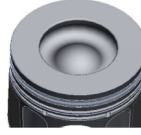
**2.2L Duratorg**  
4 Sil. 2198cc 155 PS 15,5:1  
Euro 5  
TRANSİT 2.2 (YENİ)  
2011....



**Piston Ölçüleri**  
(Piston Dimensions)

A : 48.420  
B- : 16.170  
BØ : 49.040  
D : 74.820  
E : 8.610

Pim: 30 x 66,85



**Piston Özellikleri**  
(Piston Features)

Segman Taşıyıcı  
(Ring Carrier)  
Soğutma Kanallı  
(Coolin Gallery)  
Yağ Püskürtme Oyuğu  
(Oil Jet Cut-out)  
Göz arası konik  
(Conical Eye Gap)



**Piston Parça No**  
(Piston Part No)

87-839500-52  
87-72755-STD  
87-839505-52  
87-72755 0,25

87-839507-52  
87-72755-050

87-839511-52  
87-72755 1,00

87-839500-53  
87-72755-STD1  
0,20 mm Kısa (Short)

87-839507-53  
87-72755-0501  
0,20 mm kısa (Short)

87-839511-53  
87-72755-1.001  
0,20 mm Kısa (Short)

87-839500-54  
87-72755-STD2  
0,40 mm Kısa (Short)

87-839507-54  
87-72755-0502  
0,40 mm Kısa (Short)

87-839511-54  
87-72755-1.002  
0,40 mm kısa (Short)



**Segman Seti**  
(Ring Set)

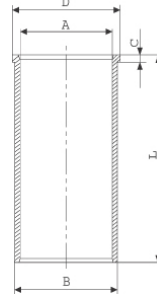
06-839500-00-STD  
06-839505-00 0,25 mm  
06-839507-00 0,50 mm  
06-839511-00 1,00 mm

2.000 CKP KV1  
2.000 P GOE  
2.000 NT ST



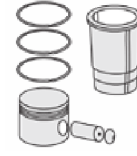
**Silindir Gömleği**  
(Liner)

14-022110-00-D  
B : 89.000  
L : 165.000  
D : 90.500  
C : 5.000

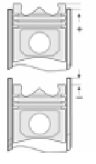


14-022111-00-D  
B : 89.500  
L : 165.000  
D : 91.000  
C : 5.500

Dış çap 0,50 mm farklı  
(Outer Diameter  
0,50mm Different)



**Silindir Kit**  
(Assembly Set)



**Piston - Blok Montaj**  
Yüksekliği  
(Piston - Block  
Assembly Height)



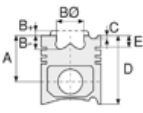


FORD PKW - Ø 86,01

87-72755-STD



**Motor Özellikleri**  
(Engine Specifications)



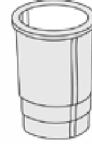
**Piston Ölçüleri**  
(Piston Dimensions)



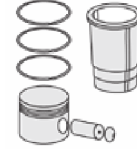
**Piston Parça No**  
(Piston Part No)



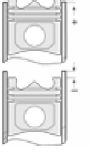
**Segman Seti**  
(Ring Set)



**Silindir Gömleği**  
(Liner)

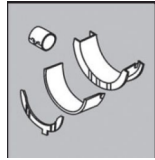


**Silindir Kit**  
(Assembly Set)



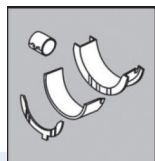
**Piston - Blok Montaj**  
**Yüksekliği**  
(Piston - Block  
Assembly Height)

**Ana Yatak**  
(Main Bearing)



H1018/5 STD

**Kol Yatak**  
(Connecting Rod Bearing)



71-4066/4 STD

**Sil. Kapak. Conta**  
(Cylinder Head Gasket)



AH6390

