



MITSUBISHI - Ø 86

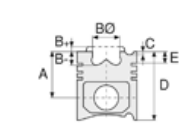
87-73430-STD



Motor Özellikleri
(Engine Specifications)

İmalatçı (Manufacturer):
MITSUBISHI
Çap (Diameter): Ø 86
FM Grup No: 6035

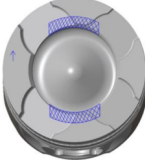
4N15 Euro VI
4 Sil. Dizel 2442cc
113 KW-154 PS
L 200
2015...



Piston Ölçüleri
(Piston Dimensions)

A : 47.800
B - : 16.550
BØ : 50.400
C1 : 1.600
C2 : 2.500
D : 71.500
E : 11.000

Pim : 32 x 70



Piston Özellikleri
(Piston Features)

Segman Taşıyıcı
(Ring Carrier)
Sert Anotlama
(Hard Anodizing)
Soğutma Kanallı
(Cooling Gallery)
Yağ Püskürtme Oyuğu
(Oil Jet Cut-Out)
Gözarası Konik
(Conical Eye Gap)



Piston Parça No
(Piston Part No)

87-871000-02
87-73430-STD
87-871000-03
87-73430-STD1
0,20 mm Kısa (Short)

87-871000-04
87-73430-STD2
0,40 mm Kısa (Short)

87-871007-02
87-73430-0,50

87-871007-03
87-73430-0501
0,20 mm Kısa (Short)

87-871000-03
87-73430-STD1
0,20 mm Kısa (Short)

87-871007-04
87-73430-0502
0,40 mm Kısa (Short)



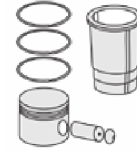
Segman Seti
(Ring Set)

06-871000-00-STD
06-871007-00-0,50 mm

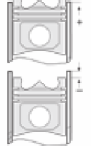
1.500 NT ST
2.050 PVD ST
2.000 NT ST



Silindir Gömleği
(Liner)



Silindir Kit
(Assembly Set)



Piston - Blok Montaj
Yüksekliği
(Piston - Block
Assembly Height)

1,35 mm Conta İle
(With Gasket) 0,30

1,40 mm Conta İle
(With Gasket) 0,40

1,45 mm Conta İle
(With Gasket) 0,50

