



Motor Özellikleri
(Engine Specifications)

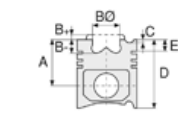
İmalatçı (Manufacturer):
MERCEDES BENZ LKW
Çap (Diameter): Ø 125
FM Grup No: 5956

OM 401LA EURO1
**901/970/972-975/
977-981**

6 Sil. Dizel 9572cc
200/230 Kw (272/313 PS)
16,75:1
Turbocharged Intercool
1226, 1227, 1429, 1726,
1727, 1827, 1831, 1838,
2422, 2427, 2527, 2531,
2635, 2638, 3031,
Actros 1831,2531, O 404
1992....

OM 402LA EURO1
**901.970-973/
976-978/982-990**

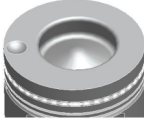
8 Sil. Dizel 12760cc 280
Kw (381 PS) 16,75:1
Turbocharged Intercool
1226, 1227, 1429, 1726,
1727, 1827, 1831, 1838,
2422, 2427, 2527, 2531,
2631, 2635, 2638,
Actros 1831,2531,
Actros 2635,
O 404, O403-
1992....



Piston Ölçüleri
(Piston Dimensions)

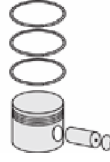
A : 87.350
B - : 25.000
BØ : 68.200
BX : 3.000
BY : 1.500
D : 133.350
E : 18.000

Pim: 46 x 102



Piston Özellikleri
(Piston Features)

Segman Taşıyıcı
(Ring Carrier)
Sert Anotlama
(Hard Anodizing)
Gözarası Konik
(Conical Eye Gap)



Piston Parça No
(Piston Part No)

87-176000-43
87-70520-STD1B
0.30 mm Kısa (Short)

87-176000-42
87-70520-STDB

87-864600-02
87-70520-STDC

87-864600-03
87-70520-STD1C
0,30 mm Kısa (Short)



Segman Seti
(Ring Set)

06-176000-30-STD

3.000 PS ST
3.000 CR IKA
4.000 CR STD

Goetze® LKZ-Ring®

06-864600-20-STD

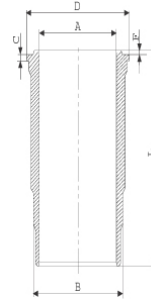
3.000 CKS KV4
3.000 CR IKA
4.000 CR STD

Goetze® LKZ-Ring®

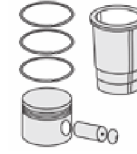


Silindir Gömleği
(Liner)

14-458410-00-WH
B : 144.500
L : 253.000
D : 153.800
C : 9.920
F : 1.000

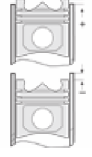


O-RING Bilgi
(O-RING Information)
24-35005-00/O
2x 140*1,9 FPM
2x 144*3,8 FPM



Silindir Kit
(Assembly Set)

89-176000-42-STD
89-70520-STDB



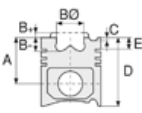
Piston - Blok Montaj
Yüksekliği
(Piston - Block
Assembly Height)

+0,07 /+0,43

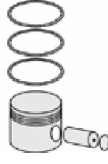




Motor Özellikleri
(Engine Specifications)



Piston Ölçüleri
(Piston Dimensions)



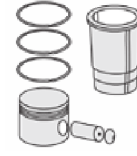
Piston Parça No
(Piston Part No)



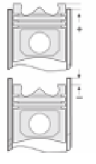
Segman Seti
(Ring Set)



Silindir Gömleği
(Liner)

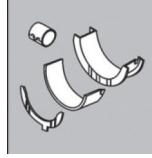


Silindir Kit
(Assembly Set)



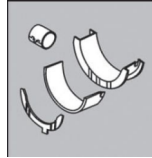
Piston - Blok Montaj
Yüksekliği
(Piston - Block
Assembly Height)

ANA YATAK
(MAIN BEARING)



H821/4 STD

KOL YATAK
(ARM BED)

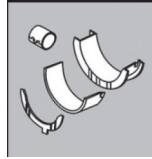


71-3693/6 STD

71-2965 STD

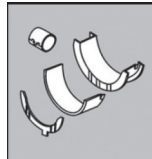
71-3289/2 STD

EKSANTRİK YATAK
(ECCENTRIC BEARING)



N110/4L STD

KOL BURCU
(SMALL END BUSH)



55-2862 SEMI

SİL. KAPAK. CONTA
(CYLINDER HEAD GASKET)

30-024941-30

30-026235-10

30-026235-30

