



MERCEDES BENZ LKW - Ø 128

87-70521-STD F

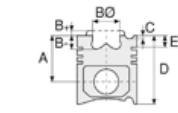


Motor Özellikleri
(Engine Specifications)

İmalatçı (Manufacturer):
MERCEDES BENZ LKW
Çap (Diameter): Ø 128
FM Grup No: 5957

**OM 355.910-918/
960-967/972**

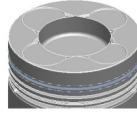
6 Sil. Dizel 11581cc
136/176
(185/240 PS) 17,2:1
1424, 1621, 1623,
1624, 1921, 1923,
1924, 2224, 2623,
2624, O 302, O 317
1967 - 1978



Piston Ölçüleri
(Piston Dimensions)

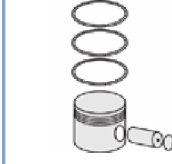
A : 90.260
B- : 27.000
BØ : 70.000
C1 : 1.100
D : 161.260
E : 23.300

Pim: 48 x 108



Piston Özellikleri
(Piston Features)

Segman Taşıyıcı
(Ring Carrier)
Gözarası Düz
(Flat Eye Gap)



Piston Parça No
(Piston Part No)

87-176900-53
87-70521-STD1F
0,20 mm Kısa (Short)

87-176900-54
87-70521-STD2F
0,40 mm Kısa (Short)

87-176900-52
87-70521-STD F

87-176907-52
87-70521-050F

87-176911-52
87-70521-100F

87-176914-52
87-70521-150F

87-176900-62
87-70521-STDH

87-176907-62
87-70521 050H

87-176911-62
87-70521 100H



Segman Seti
(Ring Set)

06-176900-80-STD
06-176907-80 0,50 mm
06-176911-80 1,00 mm
06-176914-80 1,50 mm

3.500 CK KV1
3.500 GOE
3.500 GOE
6.500 CR GOE

Goetze® LKZ-Ring®

06-176900-40-STD
06-176907-40 0,50 mm
06-176911-40 1,00 mm
06-176914-40 1,50 mm

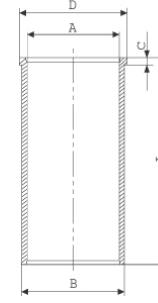
3.500 CK KV1
3.500 GOE
3.500 GOE
6.500 CR GOE

Goetze® LKZ-Ring®



Silindir Gömleği
(Liner)

14-025890-00-D
B : 133.565
L : 287.500
D : 137.500
C : 5.500



STD

14-025891-00-D
B : 134.065
L : 287.500
D : 138.000
C : 5.500

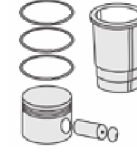
Dış Çap 0,50mm Farklı
(Outer Diameter
0,50 mm Different)

14-025892-00-D
B : 134.565
L : 287.500
D : 138.500
C : 5.500

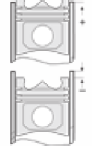
Dış Çap 1,00mm Farklı
(Outer Diameter
1,00 mm Different)

14-025893-00-D
B : 135.065
L : 287.500
D : 139.000
C : 5.500

Dış Çap 1,50 mm Farklı
(Outer Diameter
1,50 mm Different)



Silindir Kit
(Assembly Set)



Piston - Blok Montaj
Yüksekliği
(Piston - Block
Assembly Height)

- 0,09 / +0,30



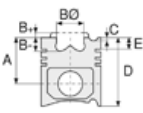


MERCEDES BENZ LKW - Ø 128

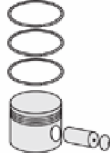
87-70521-STD F



Motor Özellikleri
(Engine Specifications)



Piston Ölçüleri
(Piston Dimensions)



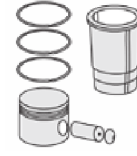
Piston Parça No
(Piston Part No)



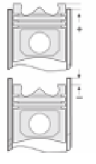
Segman Seti
(Ring Set)



Silindir Gömleği
(Liner)



Silindir Kit
(Assembly Set)



Piston - Blok Montaj
Yüksekliği
(Piston - Block
Assembly Height)

Ana Yatak
(Main Bearing)



H818/7 STD

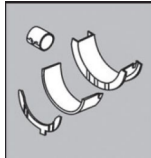
Kol Yatak
(Arm Bed)



71-3004 STD

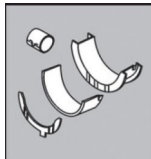
71-2549/6 STD

Eksantrik Yatak
(Eccentric Bearing)



N082/7 SEMI

Kol Burcu
(Small End Bush)



55-2538 SEMI

Sil. Kapak. Conta
(Cylinder Head Gasket)



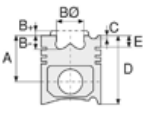
30-021834-30

AS450

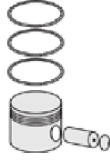




Motor Özellikleri
(Engine Specifications)



Piston Ölçüleri
(Piston Dimensions)



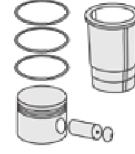
Piston Parça No
(Piston Part No)



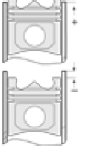
Segman Seti
(Ring Set)



Silindir Gömleği
(Liner)



Silindir Kit
(Assembly Set)



Piston - Blok Montaj
Yüksekliği
(Piston - Block
Assembly Height)

Üst Bölüm Takım Conta
(Upper Part Kit Gasket)



21-21834-25/0

Alt Bölüm Takım Conta
(Lower Section Kit Gasket)



22-14604-01/0

Full Takım Conta
(Full Set Gasket)



20-21834-10/0

