



IVECO LKW - Ø 104

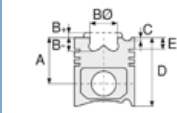
87-70619-STD



Motor Özellikleri
(Engine Specifications)

İmalatçı (Manufacturer):
IVECO LKW
Çap (Diameter): Ø 104
FM Grup No: 4089

F4AFE411 E Euro 6
4 Sil. Dizel 4485cc
118 KW-160 PS
60E16-60E16P-
75E19-75E19P



Piston Ölçüleri
(Piston Dimensions)

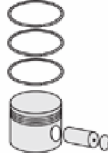
A : 62.700
B- : 17.700
BØ : 75.200
D : 96.400
E : 13.100

Pim: 40 x 87,5



Piston Özellikleri
(Piston Features)

Segman Taşıyıcı
(Ring Carrier)
Soğutma Kanallı
(Coolin Gallery)
Yağ Püskürtme Oyuğu
(Oil Jet Cut-out)
Gözarası Konik
(Conical Eye Gap)



Piston Parça No
(Piston Part No)

87-858200-22
87-70619-STD
87-858206-22
87-70619 0,40



Segman Seti
(Ring Set)

06-858200-00-STD
06-858206-00 0,40

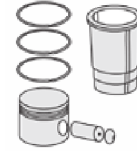
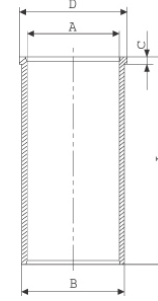
3.000  CKS KVI
2.385  P GOE
4.000  CR GOE



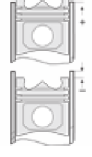
Silindir Gömleği
(Liner)

14-022460-00 D

B : 107.000
L : 204.120
D : 109.000
C : 5.000



Silindir Kit
(Assembly Set)



Piston - Blok Montaj
Yüksekliği
(Piston - Block
Assembly Height)

