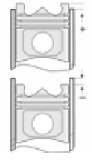
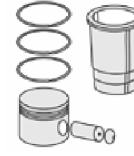
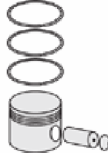
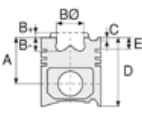




TOYOTA - Ø 96

87-72082-STD



**Motor Özellikleri**  
(Engine Specifications)

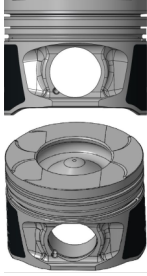
İmalatçı (Manufacturer):  
TOYOTA  
Çap (Diameter): Ø 96  
FM Grup No: 8214

1KD-FTV  
4 Sil. Dizel 2982cc  
75KW-102PS  
HILUX VII, LAND  
CRUISER  
2010...

**Piston Ölçüleri**  
(Piston Dimensions)

A : 49.600  
B - : 16.250  
BØ : 51.900  
C1 : 1.000  
C2 : 0.850  
D : 78.400  
E : 10.100

Pim: 34 x 73






**Piston Özellikleri**  
(Piston Features)

Segman Taşıyıcı  
(Ring Carrier)  
Soğutma Kanallı  
(Coolin Gallery)  
Gözarası Konik  
(Conical Eye Gap)

**Piston Parça No**  
(Piston Part No)

87-894700-02  
87-72082-STD  
  
87-894707-02  
87-72082 0,50

**Segman Seti**  
(Ring Set)

06-894700-20-STD  
06-894707-20 0,50  
  
2.000  NT ST  
1.500  NT ST  
3.000  NT ST

**Silindir Gömleği**  
(Liner)

**Silindir Kit**  
(Assembly Set)

**Piston - Blok Montaj**  
Yüksekliği  
(Piston - Block  
Assembly Height)

