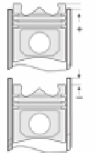
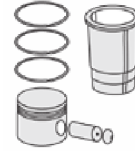
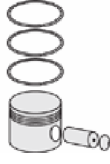
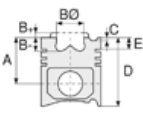




RVI - Ø 123

87-75552-STD



Motor Özellikleri
(Engine Specifications)

İmalatçı (Manufacturer):
RVI
Çap (Diameter): Ø 123
FM Grup No: 8888

DTI 11 EURO 6
6 Sil. - Dizel 24 Valf
10827 /11 L
279-338 kW /379-460 PS
380-430-460
C/P/T/D Serisi
2013--->

Piston Ölçüleri
(Piston Dimensions)

A : 78.400
B- : 18.080
BØ : 83.600
C1 : 1.000
D : 117.500
E : 9.780

Pim : 54 x 72,8



Piston Özellikleri
(Piston Features)

Soğutma Kanallı
(Coolin Gallery)
Gözarası Konik
(Conical Eye Gap)
Yağ Püskürtme Oyuğu
(Oil Jet Cut-out)

Piston Parça No
(Piston Part No)

87-882800-02
87-75552-STD

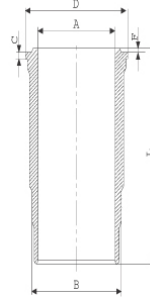
Tek Parça Çelik Piston
(Monosteel)

Segman Seti
(Ring Set)

06-882800-20-STD
3.500 PVD ST
2.500 F14
3.500 GOE CKS

Silindir Gömleği
(Liner)

14-480440-00-WH
L : 249.700
D : 149.200
C : 11.200
F : 0.800



Euro 6 Malzemeli (With
Euro 6 Material)/
O-RING BİLGİ (O-Ring
Informations)
24-35044-30/O
1x 128*137*5 EPDM
1x 128*137*5 FPM
1x 132,50*2,40 FPM

Silindir Kit
(Assembly Set)

Piston - Blok Montaj
Yüksekliği
(Piston - Block
Assembly Height)

