



PEUGEOT - Ø 85.00

87-75630-STD



Motor Özellikleri
(Engine Specifications)

İmalatçı (Manufacturer):
PEUGEOT
Çap (Diameter): Ø 85.00
FM Grup No: 7180

DW 12 RUC
(2.2L Euro 6 motor)

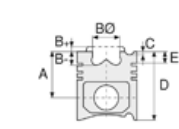
4 Sil. Dizel
2179
121KW-165 PS
BOXER
CITROEN ve OPEL
ile ortak motor
(Common Engine With
Citreon and Opel)
2019---->

DW 12 RUC
(2.2L Euro 6 motor)

4 Sil. Dizel
2179
121KW-165 PS
JUMPER
PEUGEOT VE OPEL
ile ortak motor
(Common Engine With
Peugeot and Opel)
2019---->

DW 12 RUC
(2.2L Euro 6 motor)

4 Sil. Dizel
2179
121KW-165 PS
MOVANO
PEUGEOT ve CITROEN,
ile ortak motor
(Common Engine With
Peugeot and Citreon)
2019---->



Piston Ölçüleri
(Piston Dimensions)

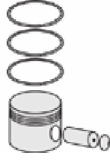
A : 35.600
B- : 13.400
BØ : 52.800
D : 55.600
E : 4.000

Pim : 30 x 50



Piston Özellikleri
(Piston Features)

Göz Arası Konik
(Conical Eye Gap)



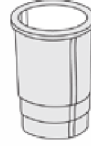
Piston Parça No
(Piston Part No)

87-872800-02
87-75630-STD
LVD Çelik Piston
(Monosteel)

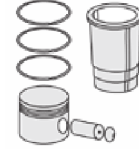


Segman Seti
(Ring Set)

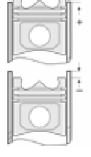
06-872800-00 STD
2.000 CK KV1
2.000 P KV1
2.000 CKS GOE



Silindir Gömleği
(Liner)



Silindir Kit
(Assembly Set)



Piston - Blok Montaj
Yüksekliği
(Piston - Block
Assembly Height)

