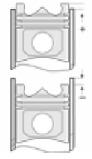
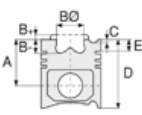




BMW- Ø 84

87-70246-STD



**Motor Özellikleri**  
(Engine Specifications)

İmalatçı (Manufacturer):  
BMW  
Çap (Diameter): 84  
FM Grup No: 1447

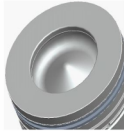
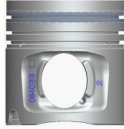
**N47D EURO 4**

4 Sil. Dizel 1995cc  
85-130 KW (115-177 HP)  
16:1  
116d, 118d, 120d, 318d,  
320d, 520d, X3 2,0d  
2004 - 2011

**Piston Ölçüleri**  
(Piston Dimensions)

A : 47.000  
B- : 15.250  
BØ : 47.500  
D : 73.000  
E : 9.120

Pim: 32 x 64



**Piston Özellikleri**  
(Piston Features)

Segman Taşıyıcı  
(Ring Carrier)  
Soğutma Kanallı  
(Coolin Gallery)  
Yağ Püskürtme Oyuğu  
(Oil Jet Cut-out)  
Gözarası Konik  
(Conical Eye Gap)

**Piston Parça No**  
(Piston Part No)

87-816307-03  
87-70246-0501  
0,20 mm kısa

87-816300-02  
87-70246-STD

87-816307-02  
87-70246 0,50

87-816300-03  
87-70246-STD1  
0,20 mm kısa

**Segman Seti**  
(Ring Set)

06-816300-00-STD  
06-816307-00 0,50

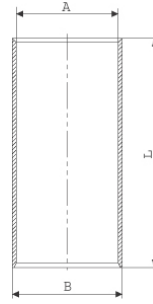
1.750 CK KV1  
1.750 F14  
2.000 CR GOE

Goetze® LKZ-Ring® / Yağ  
segmanı matkap delikli  
(Oil Ring Drill Perforated)

**Silindir Gömleği**  
(Liner)

14-011710-00 D

B : 86.100  
L : 149.500



**Silindir Kit**  
(Assembly Set)

**Piston - Blok Montaj**  
Yüksekliği  
(Piston - Block  
Assembly Height)

1 Kertik (1.46 ) conta  
ile (With Notch)  
0.80/0.92 mm

2 Kertik ( 1.55 ) conta  
ile (With Notch)  
0.93/1.03 mm

3 Kertik ( 1.66 ) conta  
ile (With Notch)  
1.04/1.20 mm

