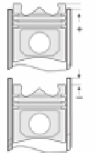
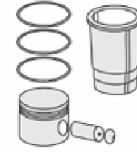
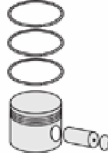
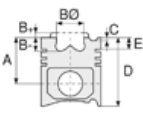




BMW- Ø 84

87-70257-STD



**Motor Özellikleri**  
(Engine Specifications)

İmalatçı (Manufacturer):  
BMW  
Çap (Diameter): 84  
FM Grup No: 1448

**N 47TU**  
4 Sil. Dizel 1995cc  
135 Kw-181HP 16,5:1  
318d, 320d, 520d, 525d  
2013...

**Piston Ölçüleri**  
(Piston Dimensions)

A : 47.000  
B- : 14.500  
BØ : 47.500  
D : 73.000  
E : 9.120

Pim: 32 x 64



**Piston Özellikleri**  
(Piston Features)

Segman Taşıyıcı  
(Ring Carrier)  
Soğutma Kanallı  
(Coolin Gallery)  
Yağ Püskürtme Oyuğu  
(Oil Jet Cut-out)  
Gözarası Konik  
(Conical Eye Gap)

**Piston Parça No**  
(Piston Part No)

87-817407-03  
87-70257-0501  
0,20 mm kısa

87-817400-02  
87-70257-STD

87-817407-02  
87-70257 0,50

87-817400-03  
87-70257-STD1  
0,20 mm kısa

**Segman Seti**  
(Ring Set)

06-817400-00-STD  
06-817407-00 0,50 mm

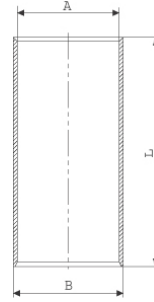
1.750 CK KV1  
1.750 P F14  
2.000 CR GOE

Yağ segmanı matkap delik  
(Oil Ring Drill Perforated)

**Silindir Gömleği**  
(Liner)

14-011710-00 D

B : 86.100  
L : 149.500



**Silindir Kit**  
(Assembly Set)

**Piston - Blok Montaj**  
Yüksekliği  
(Piston - Block  
Assembly Height)

1 çentik conta ile  
(With Notch) 0,72 / 0,83

2 çentik conta ile  
(With Notch) 0,84 / 0,93

3 çentik contaile  
(With Notch) 0,94 / 1,05

