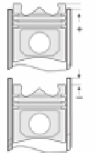
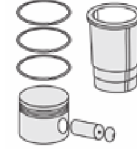
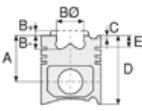




ISUZU - Ø 95.4

87-71221-STD



Motor Özellikleri
(Engine Specifications)

Piston Ölçüleri
(Piston Dimensions)

Piston Parça No
(Piston Part No)

Segman Seti
(Ring Set)

Silindir Gömleği
(Liner)

Silindir Kit
(Assembly Set)

Piston - Blok Montaj
Yüksekliği
(Piston - Block
Assembly Height)




İmalatçı (Manufacturer):
ISUZU
Çap (Diameter): Ø 95,4
FM Grup No: 3928

A : 49.750
BØ : 55.300
D : 78.450
E : 12.200

87-852700-02
87-71221-STD

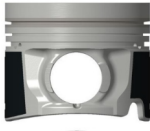
87-852707-02
87-71221-0,50

06-852700-00-STD
06-852707-00 0.50 mm

2.000  CR SR
1.500  P STD
3.000  NT ST

4JJ1 Euro 5
4 Sil. Dizel 2999cc 88-130
kw / 120-177 PS 17,5

Pim : 34 x 78



HİDROMEK, NLR-NPR-
NMR- SERİSİ
2008...

Piston Özellikleri
(Piston Features)

Segman Taşıyıcı
(Ring Carrier)
Soğutma Kanallı
(Coolin Gallery)
Yağ Püskürtme Oyuğu
(Oil Jet Cut-out)
Gözarası Konik
(Conical Eye Gap)

