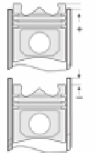
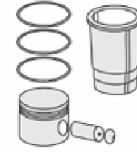
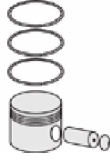
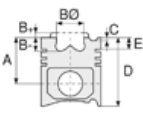




CUMMINS - Ø 107

87-73376-STD



**Motor Özellikleri**  
(Engine Specifications)

İmalatçı (Manufacturer):  
Cummins  
Çap (Diameter): 107  
FM Grup No: 2121

**ISB EURO 4**  
6 Sil. Dizel 258-284  
Kw/345-380 Hp  
PRO 522, PRO 628,  
PRO 827  
2007...

**Piston Ölçüleri**  
(Piston Dimensions)

A : 69.400  
B - : 19.400  
BØ : 59.000  
D : 103.300  
E : 8.200

Pim: 40 x 90



**Piston Özellikleri**  
(Piston Features)

Segman Taşıyıcı  
(Ring Carrier)  
Soğutma Kanallı  
(Coolin Gallery)  
Yağ Püskürtme Oyuğu  
(Oil Jet Cut-out)  
Gözarası Konik  
(Conical Eye Gap)

**Piston Parça No**  
(Piston Part No)

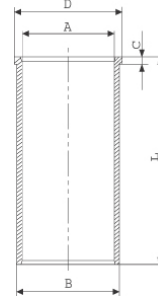
87-821000-02  
87-73376-STD  
87-821000-03  
87-73376-STD1  
0,20 mm Kısa (Short)  
87-821007-02  
87-73376 0,50  
87-821007-03  
87-73376 0,501  
0,20 mm Kısa (Short)

**Segman Seti**  
(Ring Set)

06-821000-02-STD  
06-821007-00 0,50 mm  
3.000 CR KV1  
2.500 CR KV1  
3.500 CR GOE

**Silindir Gömleği**  
(Liner)

14-022100-00-D  
B : 110.000  
L : 202.000  
D : 111.500  
C : 5.000



14-022101-00-D  
B : 110.500  
L : 202.000  
D : 112.000  
C : 5.500

Dış Çap 0,50 mm Farklı  
(Outer Diameter  
0,50 mm Different)

14-022102-00-D  
B : 111.000  
L : 202.000  
D : 112.500  
C : 6.000

Dış Çap 1,00 mm Farklı  
(Outer Diameter  
1.00 mm Different)

**Silindir Kit**  
(Assembly Set)

**Piston - Blok Montaj**  
**Yüksekliği**  
(Piston - Block  
Assembly Height)

+0,28

+0,52

