

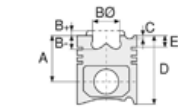


Motor Özellikleri
(Engine Specifications)

İmalatçı (Manufacturer):
MERCEDES BENZ PKW
Çap (Diameter): Ø 83
FM Grup No: 590124

OM

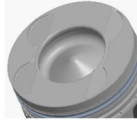
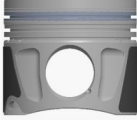
642.910/920/921/930/932/
940/950/960/961/970
6 Sil. Dizel 2987cc 211-224
PS 17, 7:1 CLS 320 CDI,
E 280 CDI, E 320
BLUETEC, E 320 CDI
2005 - 2009



Piston Ölçüleri
(Piston Dimensions)

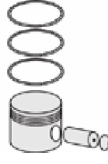
A : 45.650
B - : 14.650
BØ : 43.400
C1 : 1.330
C2 : 1.490
D : 71.650
E : 10.200

Pim : 30 x 66



Piston Özellikleri
(Piston Features)

Segman Taşıyıcı
(Ring Carrier)
Soğutma Kanallı
(Cooling Gallery)
Yağ Püskürtme Oyuğu
(Oil Jet Cut-Out)
Gözarası Konik
(Conical Eye Gap)



Piston Parça No
(Piston Part No)

87-826600-02
87-72579-STD
Piston Sağ (Piston Right)

87-826607-02
87-72579-0,50

87-826600-12
87-72580-STD
Piston Sol (Piston Left)

87-826607-12
87-72580-0,50



Segman Seti
(Ring Set)

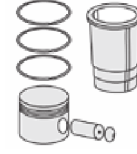
06-826600-00-STD
06-826607-00-0,50

2.000 CKS KV4
2.000 P F14
2.000 CR GOE

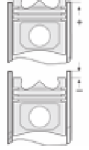
Yağ Segmanı Matkap
Delik (Oil Ring Drill Hole)



Silindir Gömleği
(Liner)



Silindir Kit
(Assembly Set)



Piston - Blok Montaj
Yüksekliği
(Piston - Block
Assembly Height)

+0,53 / +0,77

