



MERCEDES BENZ LKW - Ø 132

87-75546-STD



Motor Özellikleri
(Engine Specifications)

İmalatçı (Manufacturer):
MERCEDES BENZ LKW
Çap (Diameter): Ø 132
FM Grup No: 6032

OM 471 LA EURO 6
6 Sil. Dizel 310-390
KW / 422-539 PS Actros,
Antos, Arocs,
İŞ MAKINASI (Working
Machine), Setra
2011...

Piston Ölçüleri
(Piston Dimensions)

A : 75.000
B- : 17.200
BØ : 94.000
C1 : 1.500
D : 113.000
E : 10.000

Pim : 58 x 88



Piston Özellikleri
(Piston Features)

Soğutma Kanallı
(Cooling Gallery)
Gözarası Konik
(Conical Eye Gap)



Piston Parça No
(Piston Part No)

87-440600-02
87-75546-STD
87-440600-03
87-75546-STD1
0,20 mm Kısa (Short)

Tek Parça Çelik Piston
(Monosteel)



Segman Seti
(Ring Set)

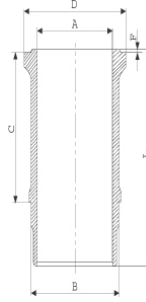
06-440600-20-STD
3.500 GDC ST
2.500 CKS KV4
3.500 CKS KV1

Goetze® LKZ-Ring®
Yağ Segmanı Matkap Delik
(Oil Ring Drill Hole)



Silindir Gömleği
(Liner)

15-610060-00-WH
B : 141.970
L : 256.000
D : 159.000
C : 7.000
R : 8.900



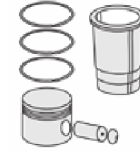
KURUM GİDERME
RİNGLİ VE O-RİNGLİ
(With Scraper Rings
And O-ring)
24-35053-00/0
1x 130*134*4.6 FKM 75
1x 146*153*3,9 FKM 75

15-610061-00 WH

B : 141.970
L : 256.000
D : 159.000
C : 203.000
R : 8.900
Flanş Kalınlığı 1.00 mm
farklı (Flange Thickness
1.00 mm Different
Work)

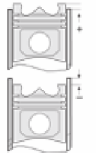
15-610062-00 WH

B : 141.970
L : 256.000
D : 159.000
C : 203.500
R : 8.900
Flanş Kalınlığı 1.50 mm
farklı (Flange Thickness
1.50 mm Different
Work)



Silindir Kit
(Assembly Set)

89-440600-02-STD
89-75546-STD
89-440600-03
89-75546-STD1
0,20 mm Kısa (Short)



Piston - Blok Montaj
Yüksekliği
(Piston - Block
Assembly Height)

-0,2090
+0,2315



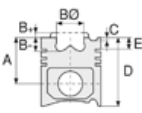


MERCEDES BENZ LKW - Ø 132

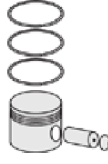
87-75546-STD



Motor Özellikleri
(Engine Specifications)



Piston Ölçüleri
(Piston Dimensions)



Piston Parça No
(Piston Part No)



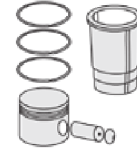
Segman Seti
(Ring Set)



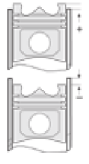
Silindir Gömleği
(Liner)

15-610063-00 WH
B : 141.970
L : 256.000
D : 160.000
C : 203.000
R : 8.900
Flanş Dış Çapı +
Flanş Kalınlığı
1.00 mm farklı (Flange
Outer Diameter +
Flange Thickness
1.00 mm difference)

15-610064-00 WH
B 141.970
L 256.000
D 160.500
C 203.500
R 8.900
Flanş Dış Çapı +
Flanş Kalınlığı
1.50 mm farklı (Flange
Outer Diameter +
Flange Thickness
1.00 mm difference)

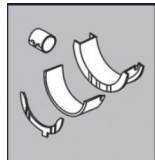


Silindir Kit
(Assembly Set)



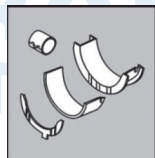
Piston - Blok Montaj
Yüksekliği
(Piston - Block
Assembly Height)

Ana Yatak
(Main Bearing)



72-5021 STD

Kol Yatak
(Connecting Rod Bearing)



71-5022 STD

