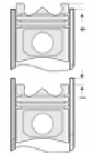
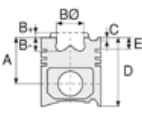




PEUGEOT - Ø 85.00

87-75630-STD



**Motor Özellikleri**  
(Engine Specifications)

İmalatçı (Manufacturer):  
PEUGEOT  
Çap (Diameter): Ø 85.00  
FM Grup No: 7180

**DW 12 RUC**  
( 2.2L Euro 6 motor )

4 Sil. Dizel  
2179  
121KW-165 PS  
BOXER  
CITROEN ve OPEL  
ile ortak motor  
(Common Engine With  
Citreon and Opel)  
2019---->

**DW 12 RUC**  
( 2.2L Euro 6 motor )

4 Sil. Dizel  
2179  
121KW-165 PS  
JUMPER  
PEUGEOT VE OPEL  
ile ortak motor  
(Common Engine With  
Peugeot and Opel )  
2019---->

**DW 12 RUC**  
( 2.2L Euro 6 motor )

4 Sil. Dizel  
2179  
121KW-165 PS  
MOVANO  
PEUGEOT ve CITROEN,  
ile ortak motor  
(Common Engine With  
Peugeot and Citreon)  
2019---->

**Piston Ölçüleri**  
(Piston Dimensions)

A : 35.600  
B- : 13.400  
BØ : 52.800  
D : 55.600  
E : 4.000

Pim : 30 x 50



**Piston Özellikleri**  
(Piston Features)

Göz Arası Konik  
(Conical Eye Gap)

**Piston Parça No**  
(Piston Part No)

87-872800-02  
87-75630-STD  
87-872808-02  
87-75630-0,60

LVD Çelik Piston  
(Monosteel)

**Segman Seti**  
(Ring Set)

06-872800-00 STD  
06-872808-00 0,60 mm  
2.000 CK KV1  
2.000 P KV1  
2.000 CKS GOE

**Silindir Gömleği**  
(Liner)

**Silindir Kit**  
(Assembly Set)

**Piston - Blok Montaj**  
Yüksekliği  
(Piston - Block  
Assembly Height)

