



ISUZU - Ø 110,04

87-71225-STD



**Motor Özellikleri**  
(Engine Specifications)

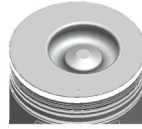
İmalatçı (Manufacturer):  
ISUZU  
Çap (Diameter): Ø 110,04  
FM Grup No: 3913

4HE1-T  
4 Sil. Dizel 4751cc 146 Ps  
NQR3D, TURKUAZ  
1999....

**Piston Ölçüleri**  
(Piston Dimensions)

A : 66.200  
B- : 22.200  
BØ : 56.500  
BX : 5.000  
BY : 1.000  
D : 119.950  
E : 12.900

Pim: 40 x 87



**Piston Özellikleri**  
(Piston Features)

Segman Taşıyıcı  
(Ring Carrier)  
Çelik Plaka  
(Steel Strut)  
Soğutma Kanallı  
(Coolin Gallery)  
Gözarası Konik  
(Conical Eye Gap)



**Piston Parça No**  
(Piston Part No)

87-853000-02  
87-71225-STD



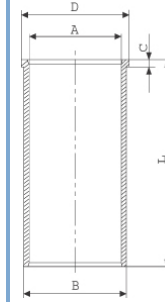
**Segman Seti**  
(Ring Set)

06-440600-20-STD  
3.000 NT ST  
2.500 CR GOE  
4.000 NT ST



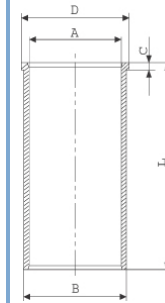
**Silindir Gömleği**  
(Liner)

14-022070-00-D  
B : 116.000  
L : 210.000  
D : 121.600  
C : 6.300



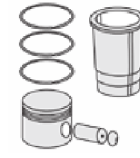
Semi Finish

14-040080-00-DH  
B : 115.001  
L : 210.000  
D : 121.600  
C : 5.070  
F : 0.400

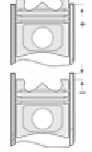


Dış Yüzeyi  
Fosfat Kaplı  
(Outer Surface  
Phosphate Coated)

14-040081-00-DH  
B : 115.280  
L : 210.000  
D : 121.850  
C : 5.950  
F : 0.400



**Silindir Kit**  
(Assembly Set)



**Piston - Blok Montaj**  
**Yüksekliği**  
(Piston - Block  
Assembly Height)

1,41-1,49 mm Conta  
Kalınlığı (Gasket  
Thickness)  
+0,579/+0,659

1,46-1,56 mm Conta  
Kalınlığı (Gasket  
Thickness)  
+0,660/+0,729

1,51-1,59 mm Conta  
Kalınlığı (Gasket  
Thickness)  
+0,730/+0,809



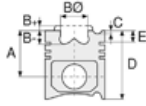


ISUZU - Ø 110,04

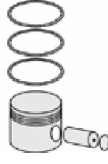
86-71225-STD



**Motor Özellikleri**  
(Engine Specifications)



**Piston Ölçüleri**  
(Piston Dimensions)



**Piston Parça No**  
(Piston Part No)



**Segman Seti**  
(Ring Set)

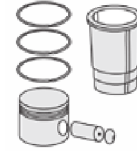


**Silindir Gömleği**  
(Liner)

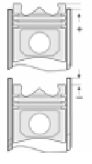
Dış Çap 0,25 mm Farklı  
(Outside Diameter  
0,50 mm Different)

14-040082-00-DH  
B : 115.530  
L : 210.000  
D : 122.100  
C : 6.200  
F : 0.400

Dış Çap 0,50 mm Farklı  
(Outside Diameter  
0,50 mm Different)

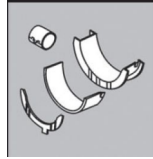


**Silindir Kit**  
(Assembly Set)



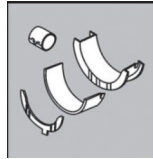
**Piston - Blok Montaj**  
**Yüksekliği**  
(Piston - Block  
Assembly Height)

**Ana Yatak**  
(Main Bearing)



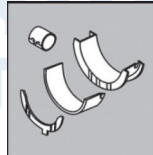
H1307/5 STD

**Kol Yatak**  
(Arm Bed)



71-4856/4 STD

**Ay Yatak**  
(Thrust Washer)



A307/3 STD

