



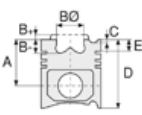
Motor Özellikleri
(Engine Specifications)

İmalatçı (Manufacturer):
MERCEDES BENZ LKW
Çap (Diameter): Ø 125
FM Grup No: 6033

OM 470 Euro VI

6 Sil. Dizel 240
KW/326 hp –
335 kW/456 hp
Actros, Antos,
Arocs, Setra

2012--->



Piston Ölçüleri
(Piston Dimensions)

A : 68.000
B- : 14.450
BØ : 91.000
C1 : 1.500
D : 102.500
E : 10.000

Pim: 55 x 81,5



Piston Özellikleri
(Piston Features)

Soğutma Kanallı
(Coolin Gallery)
Gözarası Konik
(Conical Eye Gap)



Piston Parça No
(Piston Part No)

87-865100-02
87-75507-STD

87-865100-03
87-75507-STD1
0,20 mm Kısa (Short)

Tek Parça Çelik Piston
(Monosteel)



Segman Seti
(Ring Set)

06-865100-00-STD

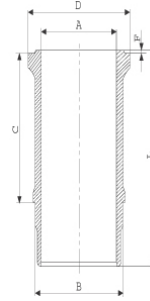
3.500 GDC ST
2.500 CR KV4
3.500 CKS KV1

Goetze® LKZ-Ring® /
Yağ Segmanı Matkap
Delik (Oil Ring Drill Hole)



Silindir Gömleği
(Liner)

15-610050-00-WH
B : 135.000
L : 236.500
D : 150.000
C : 7.000
F : 0.500
R : 8.900



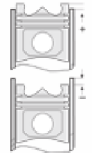
Kurum Giderme Ringli
ve O-Ringli
(With Scraper Rings
and O-RING)
24-35053-20/O
2x 134*141,1*3,80 FKM



Silindir Kit
(Assembly Set)

89-865100-02-STD
89-75507-STD

89-865100-03
89-75507-STD1
0,20 mm Kısa (Short)



Piston - Blok Montaj
Yüksekliği
(Piston - Block
Assembly Height)

-0,19

+0,23

