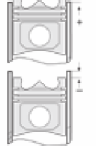




BUKH - Ø105

87-70309-STD



Motor Özellikleri
(Engine Specifications)

İmalatçı (Manufacturer):
BUKH
Çap (Diameter): Ø105
FM Grup No: 1501

1 Sil. Dizel 16PS
G 105

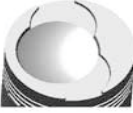
2 Sil. Dizel 32PS
2G 105

3 Sil. Dizel 48PS
3G 105, 403, D302, D452

Piston Ölçüleri
(Piston Dimensions)

A : 71.600
B- : 5.730
BØ : 65.000
Bx : 10.000
C1 : 2.600
D : 134.500
E : 19.000

Pim: 38 x 90



Piston Özellikleri
(Piston Features)

Gözarası düz
(Flat Eye Gap)

Piston Parça No
(Piston Part No)

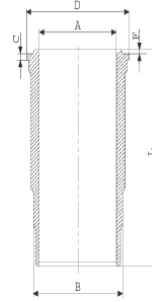
87-703600-02
87-70309-STD

Segman Seti
(Ring Set)

06-703600-10-STD
2.500 P STD
3.000 P STD
3.000 P STD
6.000 P STD
6.000 P STD

Silindir Gömleği
(Liner)

14-351150-00-WH
B : 120.000
L : 238.500
D : 129.000
C : 8.000
F : 0.500



Silindir Kit
(Assembly Set)

88-703600-02-STD
88-70309-STD

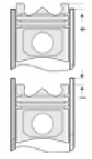
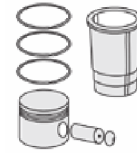
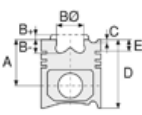
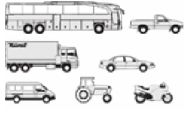
Piston - Blok Montaj
Yüksekliği
(Piston - Block
Assembly Height)





BUKH - Ø 105

87-70310-STD



Motor Özellikleri
(Engine Specifications)

Piston Ölçüleri
(Piston Dimensions)

Piston Parça No
(Piston Part No)

Segman Seti
(Ring Set)

Silindir Gömleği
(Liner)

Silindir Kit
(Assembly Set)

Piston - Blok Montaj
Yüksekliği
(Piston - Block
Assembly Height)

İmalatçı (Manufacturer):
BUKH
Çap (Diameter): Ø 105
FM Grup No: 1502

A : 71.600
B- : 12.400
BØ : 65.000
BX : 10.000
C1 : 2.600
D : 134.600
E : 18.900

87-703600-12
87-70310-STD

06-703600-10-STD

2.500 P STD
3.000 P STD
3.000 P STD
6.000 P STD
6.000 P STD

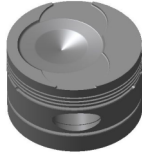
14-351150-00-WH
B : 120.000
L : 238.500
D : 129.000
C : 8.000
F : 0.500

88-703600-22-STD
88-70310-STD

4K 105
4 Sil. Dizel 51Kw (68PS)
TRAKTOR 4x105

Pim: 38 x 90

6K 105
6 Sil. Dizel 75Kw (101PS)
TRAKTOR 4x105
1961....



Piston Özellikleri
(Piston Features)

Gözarası düz
(Flat Eye Gap)

